

THE Cresset

January 2014

It's a
New Year!



News, views and what's on, in and around Bottisham

Saplings Pre-School Playgroup

Based in Bottisham Primary School grounds, we offer lots of fun & structured play with caring qualified staff in a safe environment.

Playgroup for 2½ years onwards

Sessions run on a Monday, Tuesday, Thursday and Friday morning, 9am - 12noon and afternoons 12.15 - 3.15pm depending on demand. £8.00 per session.

Pre-playgroup for 2 to 2½ years

Creative play sessions for 2 to 2½ year olds with their mums, dads or childminders every Wednesday morning 9.15 - 11.15am. £6.50 per session



Places now available, please call 01223 813226 for more information!



Welcome to 2014

First of all I would like to wish all our readers a Happy New Year and to hope that the festive season gave you all that you wanted for yourself and for those around you.

Myself, I was spoilt as usual with the undeniable benefit and delight of having the family all together. Even better was that we were the guests. There may be those who say

that there are moments during the holidays when Christmas can rank up there with moving house and divorce on the stress-o-meter of life, but those lucky enough to have their family together, all know that they would not want it any other way.

To have Christmas with two families, with a 3½ year old boy and two 1½ to 2 year old girls and watch the delight in their eyes is worth all the effort. (And yes, before all you ladies shout, I can hear you saying “what does he know about effort?”) I have to tell you, getting that M&S voucher in Newmarket on Christmas Eve was no easy task. They had also run out of those little Christmassy carrier bags!The Gin was on special though!Only joking dear!

I would like to take the opportunity, as we head into a New Year, to thank all who contribute to producing *The Cresset*, your village magazine. To that hard working group who organise the distribution of *The Cresset*, and the band of volunteers who deliver it to every house. To all those contributors regular and occasional who submit their articles for our enjoyment, entertainment or enlightenment. Also to all those who write the letters and comments that trigger discussion and debate around life in Bottisham.

Also to all our advertisers without whose support the magazine could not be produced. The cost of compositing and printing *The Cresset* is quite high and is only covered by advertising and donations from village organisations. We have no other funding. To all a big thank you.

January will bring with it some new challenges, I am sure, for us all as individuals but also for us as a village. The potential expansion of Bottisham will be decided this year and sooner than some may think. Look out in this month's magazine for details of the public meeting on Thursday 16th January at 7.30pm, at The Royal British Legion Social Club Poppy room to discuss David Wilson's proposal to increase their housing application of 50 houses (yet to be passed) to 150 houses! Details on page 5

Tony Jolley's article this month focuses more than most on what affects us as a village. As in most of Tony's articles, he brings to our attention the things which affect us all. This month it is the issue of land development and usage. There you can read clearly the issues which are going to affect us soon. He highlights the involvement of the Village College in the life of this village and the opportunity they have to develop in Bottisham with our support, which will be a subject of much discussion at the meeting at the Village College on the 14th January. (See the letter in my Editorial last month).

He also makes very clear points about the issues surrounding the plans for new housing. It clearly lays out the reasons why we as a village should make our voices heard. If we say nothing, rest assured it will be taken as acquiescence.

But enough of the heavy stuff.

The Bottisham players come to the fore again with their pantomime (Oh no they don't— Oh yes they do!). Well worth supporting and hurry as tickets go quickly.

(Editorial continued on page 2.)

MANCHETTS Cambridgeshire • Suffolk
Rescue & Recovery

24hr
response centre
01638
742987

*"For all your rescue & recovery needs at the roadside,
motorbikes, vans, cars, and commercial vehicles alike"*

www.manchetts.co.uk e-mail: recovery@manchetts.co.uk
Broads Road Burwell Cambs CB5 0BQ

(Editorial continued.)

Lots of Events at the British Legion Club. See their what's on page for details including a Members and Guest's Children's party, the Bowling Club's event of a Burns Supper (get your tickets soon) and a Jumble Sale

The Giles Bream trust is advertising for applicants. If you, or someone you know think they qualify, then applications are welcome.

Please enjoy the rest of the season's break if you have one and enjoy the rest of our January magazine.

Happy New Year

Peter Walker, Your Editor.

BOTTISHAM VILLAGE COLLEGE

Invitation to an Open meeting

To discuss the opportunities to develop the relationship of the college with the Local Community beyond the Education of the Pupils attending the school.

With a short presentation to inform the discussion and then the opportunity for questions and comments, so that all views or concerns can be aired.

**To be held in the Hall 2 via the main entrance at the Village College
14th January 2014 at 7.30p.m.**



Excelr8 Learning



Tuition Centres in Milton, Hardwick, & Sawston

- ✓ Expert Maths and English Tuition.
- ✓ Personalised learning programmes.
- ✓ Building your child's self-esteem and confidence.

Our FULLY QUALIFIED teachers have the experience and motivation to help students achieve their potential. Whether parents are worried about their child's progress, or simply wish to provide some extra quality tuition, Excelr8 Learning teachers are here to help.



Lesson prices are from **£23.95** and include: a **75 minute** lesson, parent feedback after every lesson, high quality resources and carefully planned lessons every time. Children feel relaxed and happy; parents value the honest, independent advice we provide.

FREE TRIAL lessons can be arranged by phoning or completing the free trial form online.

www.excelr8learning.co.uk
01954 211888



Contents

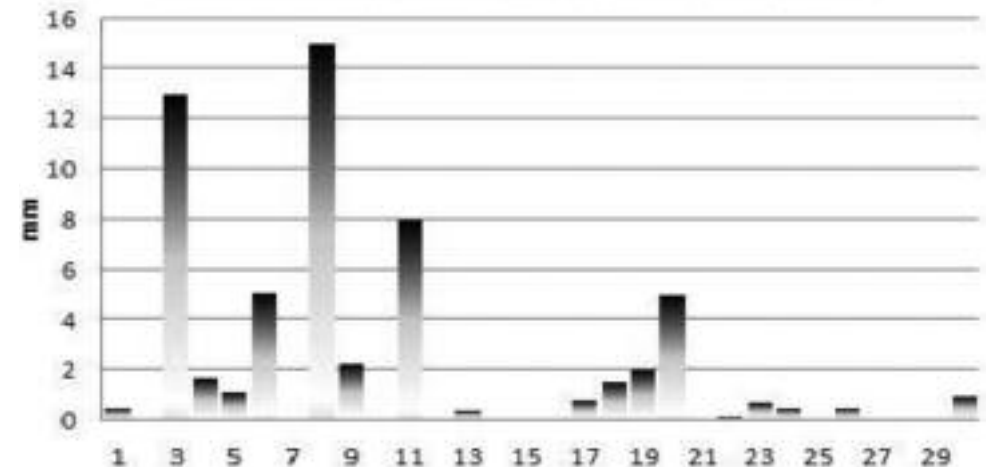
Rev. Sue Giles.....7	Sales, Wants and Swaps.....39
RBL - Bottisham Branch.....8	Bottisham Players.....39
The Royal British Legion Social Club.....9	Public Transport Matters.....41
Bottisham Patients' Group.....11	East Anglian Air Ambulance.....43
Bottisham Craft Fayre & The Hub.....12	Cambridgeshire Fire/Rescue.....43
Angelsey Group Mothers Union.....13	Sports Nut.....51
Bottisham Meeting Point.....17	Anglesey Abbey & Wicken Fen.....55
Bottisham WI.....19	Jolley Old World.....57
WEA News.....19	To the Editor.....59
Parish Council Notes.....31	At a Glance.....61
East Cambs District Councillors' Notes.....33	RE:NEW.....65
Bottisham/District Gardening Club.....37	Useful Information.....68

The Rain Spot

The total rainfall for 2012 was 834mm. This year's rainfall up to the end of November is 490.8mm. Therefore to match last year's rainfall by the end of December, December's rain will have to be about 344mm. Don't build the Arc just yet as last year was very exceptional. I expect it to be nearer to 50mm, bringing our total to about 550mm, which is about average – not counting last year!

Terry Chapman

November Rainfall for Bottisham



BOTTISHAM PHARMACY



UNDER NEW OWNERSHIP
PROVIDING **NHS** SERVICES
YOUR LOCAL INDEPENDENT PHARMACY



*FREE repeat prescription ordering
collection and delivery service*

ONE CALL DOES IT ALL

NO NEED FOR NUMEROUS JOURNEYS

With one call to us we will

- Order your Prescription
- Collect your Prescription
- Deliver your Prescription

FREE
L'oreal skincare
goody bag when
you sign up

FREE service available from the
following local Doctors Surgeries:

Bottisham Surgery
Burwell Surgery
Oakfield Surgery
Orchard House Surgery
Rookery Medical Centre
Raynards Surgery, Red Lodge
Fulbourn Health Centre
Cherry Hinton Medical Centre

DELIVERY AREA



We deliver incontinence pads **FREE OF CHARGE** if we dispense your prescription

Telephone: 01223 812321

8 High Street, Bottisham, Cambridge CB25 9DQ
bottishampharmacy@gmail.com

PUBLIC MEETING

Thursday 16th January at 7.30pm
at The Royal British Legion Social Club Poppy room
**to discuss David Wilson's proposal to increase their
housing application from 50 to 150 houses**

David Wilson Homes have decided that they want to alter their proposed planning application for houses off of Bell Road from 50 to 150 houses. Councillor Bryant has met with East Cambs District Council Planning Department who were surprised and not at all happy with the change to the proposed application. There is, what is known as an examination in public scheduled for February 2014. This is where a Government Inspector considers the local plans for the District and decides whether future housing projections are accurate or whether more housing needs to be allocated. David Wilson Homes will go to the examination in public to argue their case that they believe there is a need for a greater level of housing. East Cambs have assured us that if they have to provide additional housing in the district then this could easily be absorbed at Soham and Ely as large developments are currently taking place there and an extra 100 houses will not make a difference. The District Council do agree that Bottisham does not have the infrastructure to support 150 houses but the Government Inspector will make that decision. East Cambs will complete the Masterplan process with or without David Wilson Homes. They will review the Masterplan in light of comments made at the Consultation. The County Council and English Heritage had some objections to how the plans encroached on the ancient monument. They will take these comments on board, make amendments and then send to us. A public meeting has been arranged for 16th January, 7.30pm at the Royal British Legion which Katie Childs from the Planning Department at East Cambs District Council has agreed to attend.

We may have more information by this stage as the District Council will have met for discussions with David Wilson Homes. This meeting is for all residents of Bottisham. This is your village and it is important that you know what is or could be happening. Please put the date in your diary, it would be good to see as many residents as possible.

Copy deadline for the next issue is 14 January.

Please send material to the editor at cresset@bottishampc.org.uk

JOHN JARVIS

BUILDERS

Property Maintenance, Extensions,
Alterations, Painting, Brickwork, Roofing

All building work carried out

Prompt friendly service

Insurance work undertaken

01638 743623

Mobile 07802 659283

No job too small

C. G. Gardiner

Heating and Plumbing Services

*For all your domestic heating
and plumbing needs contact*

 **01223 811883**

Howgar House, 41 Bell Road, Bottisham, Cambridge, CB25 9DF

Sue Giles Writes...

Generosity is often thought of as a natural gift that some people have and others don't, rather in the way that some people are musical or artistic and some are not. It is true that some people are naturally very generous and will spontaneously respond to the needs of others. They may respond with financial support or with the gift of time or by using a talent that they have been given to help someone else. Others have to work at being generous. They may be naturally more cautious, more anxious about how things will work out and what resources they will need for the future. Yet generosity is something that can be learnt, cultivated and practiced, and the more a person seeks to live generously the easier it becomes. I was very touched over the Christmas period to see how generous people in our villages have been and how they have wanted to support other local people. One couple felt that they had sufficient means to live comfortably so they donated their heating allowance to support other families who were experiencing real difficulties in making ends meet. Another person rang wanting to know if there was anyone who would be alone at Christmas who might like a Christmas dinner or a short visit and a mince pie on Christmas day. Finally there was a local raffle for a good cause. The person selling the tickets did a great job but didn't achieve their target of £500. Another resident on hearing this made up the total with a gift of £100. Some local examples of people living generously.

As I write this South Africa is celebrating the life of Nelson Mandela. He was generous in his attitude to those who had kept him in prison for so long; he did not hold on to bitterness. He was generous in the time he gave to people, and in the way he noticed and remembered them. He was generous in his sharing of power, and his recognition of the rights and hopes of all his rainbow people.

As we begin another year, this may be a time for us to consider how we can develop a generous spirit, and practice generosity in our thoughts and actions. Being a follower of Christ who gave up so much to be with us requires each of his followers to put their faith into action day by day: let us do as he did – live generously!

Holy Trinity, Bottisham - Services in January 2014

Wednesday 1st	8p.m.	Compline by Candlelight led by <i>Dr Sarah Maxwell</i>
Sunday 5th	11a.m.	Epiphany Service of the Word <i>Revd Sue Giles</i>
Sunday 12th	11a.m.	Holy Communion <i>Revd Elizabeth Caswell</i>
Sunday 19th	8a.m.	Holy Communion (Book of Common Prayer) <i>Revd Sue Giles</i>
	11a.m.	Morning Prayer <i>Dr Sarah Maxwell</i>
Sunday 26th		No service in Holy Trinity
	10a.m.	Benefice Communion in Lode

Details of other services in the Benefice are on the notice board in the church.

Copy deadline for the next issue is 14 January.

Please send material to the editor at cresset@bottishampc.org.uk

Bottisham Bowling club



BURNS SUPPER

18TH JANUARY 2013 7.30pm



At the Royal British Legion Social Club
Details at the club or call Jim Carswell on 812857

JUMBLE SALE

Saturday 25th January at 2.00pm

At The British Legion Social Club
Bring along your jumble from 10.00am

Royal British Legion - Bottisham & District Branch



POPPY APPEAL- 2013/2014

I would like to thank all those in Bottisham and District who were so generous in their support for this year's appeal.

The total amount collected locally so far at 9th December 2013 for 2013/14 is £5528 of which the house to house and business collections amount to £4134. Special events at the Legion Club raised £689.

Thank you all for your support. The amount collected so far is approx £480 less than at this time last year. So do remember that the appeal remains open and donations are welcomed throughout the year.

If you would like to join my team of volunteers with house to house collections next year please call me on 811792.
John Overton (Branch Chairman)



Copy deadline for the next issue is 14 January.

Please send material to the editor at cresset@bottishampc.org.uk



The Royal British Legion Social Club

WHAT'S ON THIS MONTH AT THE LEGION SOCIAL CLUB

Line Dancing every Tuesday and Wednesday (except the first Wednesday in the month.)

Bingo every 1st and 3rd Sunday

OPENING TIMES

Mon-Thurs 5-11pm : Fri 5-12pm : Sat-11.45-12pm : Sun 12.-11pm
(Sunday may close at 10pm with the discretion of the staff on duty)

All live premier league games & Sky sports are shown at the club

Saturday 4th January

Member's Children's Party

4.00pm - 8.00pm, free entry

****Now in it's third year!****

Saturday 18th January 2014 7.30pm

Bowls Club Burns Night Dinner

Traditional meal and entertainment

Book your table. £17 per person

Monday 20th January 8pm

Members Annual General Meeting

Saturday 25th Starting at 2.00pm

Bowls Club Jumble Sale

Bring along your jumble from 10.00am

We would welcome new members onto the committee

If you would like to join the committee and make a contribution for the year 2014, add your name to the notice in the club.

Are you having a celebration?

Are you looking for a business meeting venue?

Is your society or Club looking for a friendly place to meet?

If so, the Hall and Poppy Lounge room is available to hire for all your functions call in and speak to Kate or ring the Secretary on 812407

The Royal British Legion, Bottisham & District Branch,
31 Downing Close, Bottisham, Cambridge CB25 9BA
Tel. 01223 812063 www.britishlegion.org.uk/branches/bottisham



www.babysensory.com
Award-winning classes for babies
from birth to 13 months



Classes run on
Monday Mornings
Quy Village Hall
CB25 9AW

For more details on all our
Cambridgeshire classes visit:
www.babysensory.com

Please contact: Juliette
Tel: 07966 789785
Email: cambridge@babysensory.co.uk



camsmartrepairs.co.uk
Mobile service at your front door
or place of work

Bumper scuffs	Alloy wheels
Vandal scratches	Free estimates
Dent repairs	No VAT

07462 893390

SAVE UP TO 20%
against other 'SMART' repairers

MARK CRAWFORD, CAMSMART LTD, Lode CB25 9EL

Bottisham Patients' Group

Volunteer drivers needed: Did you know that Bottisham Medical Practice has a car service to bring patients *who have no means of transport* to the surgery for appointments with a doctor or nurse? The Practice gave a 'thank you' lunch on 3rd December for the volunteer drivers from the surrounding villages. If you have no transport, phone for an appointment as usual and say that you need it. You'll be offered an appointment at either 9.10, 9.20, or 9.30 am. More drivers are needed in all the villages so if you can volunteer for this service please phone the Practice on 01223 810030 or email the Office Manager on dawn.sutton@nhs.net and she will put you in touch with your village's coordinator.

Annual Patients' Survey: It's that time of year again when the Practice, with the Patients' Group, must carry out a survey to find out the level of patients' satisfaction with the services it provides. The results will be used to identify where improvements can be made. If you have an appointment during the survey period (6th-17th January) you'll be asked to complete the General Practice Annual Questionnaire which is used by most local practices. This year you can also complete the survey online at www.bottishammedicalpractice.nhs.uk and we urge you to do so to ensure that the results reflect the views of a wider cross section of patients.

Treating minor illnesses at home: Minor illness is common, especially in children, and symptoms often begin when pharmacies are closed. You can buy medicines from pharmacies, without a doctor's prescription, to keep at home for future use. There's useful advice on the Practice's website: the *When should I worry?* leaflet and the *Useful medicines to have at home* leaflet are available on the 'Clinics and Services' tab, under 'Family Health'. 'Treat Yourself Better Without Antibiotics' is a new website (www.treatyourselfbetter.co.uk) which provides information and advice and urges people to self-treat winter ailments. Research shows that half the UK adult population think antibiotics can treat colds and 'flu when they are ineffective and, in addition, there is the growing problem of resistance to them.

GPs' Contract: Major changes to the GPs' contract from next April include cuts to Quality Outcomes Framework payments, new incentives for reducing emergency admissions, named GPs for the over 75s and removal of practice boundaries. The Royal College of General Practitioners (RCGP) and the National Association for Patient Participation (NAPP) have launched a *Put Patients First: Back General Practice* campaign to improve patient care by increasing funding for general practice from 8.4% to 11% of the UK NHS budget by 2017. There is a growing crisis in general practice, which remains the first point of contact with the health service for most of the public. Increased workloads to provide the care needed by a growing population, declining resources and an overstretched workforce place a huge strain on services. This is bad news for patients, who face longer waits for appointments to see GPs and a lower level of care than GPs want to provide. Much non-urgent care is being provided at great expense in hospitals, when most people want to be looked after in their local community. [Source: NAPP Bulletin November 2013]

Out-of-hours medical care: if you need urgent medical care or advice between 6.00 pm and 8.30 am or at weekends phone the surgery number 01223 810030 and you will be immediately transferred to the NHS111 service which is well established now in Cambridgeshire and aims to meet your needs in the shortest possible time. You should only phone 999 for life-threatening illness of injury.

(Bottisham PG continued on page 12.)



BOTTISHAM MEETING POINT
every
WEDNESDAY
10.30am - noon

at
QUEEN'S COURT DAY CENTRE

A place where you can meet old friends, make new friendships, relax, chat and enjoy coffee, cake and biscuits in a friendly relaxed atmosphere.

EVERYONE WELCOME
ADMISSION FREE

**in the COMMUNITY ROOM
at QUEEN'S COURT,
1st SATURDAY OF THE
MONTH FROM 10AM**



COMMUNITY INFO
COFFEE & CAKE
CARDS & CRAFT
CHARITY STALLS
CITIZENS' ADVICE

**all ages
WELCOME!**

Organised by Queen's Court and RE:NEW
for the community

(Bottisham PG continued.)

The Walking Group now has a good number of walkers. Join them next on Friday 10th & Thursday 23rd January at 11.00 am at the Surgery. For more details of this and other Patients' Group activities go to www.bottishammedicalpractice.nhs.uk/ppg.aspx.

Would you know what to do if your partner, child, friend needed emergency life support? Learn what to do at

The British Heart Foundation's HEART START session

on Saturday 8th February 2014 from 9.30 am to 12 noon at the Surgery

Book your place by emailing patientsgroup@outlook.com or phoning 01223 811770

We wish all the patients and staff at Bottisham Medical Practice health and happiness in 2014.

Bottisham Craft Fayre and "The Hub"

Hello all and welcome to what will be the Last Bottisham Craft Fayre information column. It is with immense sadness I have to say, Dec 7th craft fair was the last. We are Bottisham parents and we set this up as a community event, and our driving force was to raise money for local good causes.

We have met some wonderful crafters and many we can now call friends. We have also raised money for many local worthwhile causes including, Bottisham Scouts, Saplings Playgroup, and the Comfort fund at Queens Crt to name a few.

We thought the community in Bottisham would engage and welcome the craft fair, not only as it raised money for local causes. It also offered an alternative to the High Street shops and with the partnership with "The Hub" it had an area where you could just pop in for a chat. We spent hours organising and publicising these events, however we cannot expect the crafters to carry on when the community it is intended to work for, and with, do not seem to want it, as numbers attending where not as we had hoped. It is a shame as we loved organising it, and we cannot thank (those that had stalls and those that came along) you enough for helping us raise £100's Over the last few months for the good causes it supported.

The Hub will continue and is a worthwhile event in its own right, so please continue to support that. We would also like to thank Sharon Reynolds and Rev. Simon Goddard from the Hub for all their support over the last 6 months.

Our original team consisted of Louise & Glen Wakefield and Tracey Rusk and Holly Ingram stepped in when Tracey was unable to carry on a few months back. I would just like to thank Tracey, Holly and my wife Louise for the hours and hours you put into this event, trying to make it a success.

May we finally take this opportunity to wish you all happy Christmas and a wonderful 2014.

Bottisham Craft Fayre organising team



Copy deadline for the next issue is 14 January.

Please send material to the editor at cresset@bottishampc.org.uk

The Anglesey Group Mothers' Union

Our last talk of the year was given by Richard Todd, who is the head gardener at Anglesey Abbey. He told us that he has now worked there for 40 years and, before his talk, he showed us some beautiful pictures which had been taken in various parts of the grounds.

Richard's subject was about 'Autumn and Recycling Garden Waste'. This was an extremely enlightening talk and he said that these days about 95% of their waste is actually recycled. As Anglesey Abbey stands in approximately 120 acres, this clearly creates a huge amount of recycled vegetation and leaf mould which is then used for all their potting, as well as being a great soil improver.

Our programme for the New Year begins with a service of Holy Communion on Thursday, 16th January 2014 at 2.30p.m. in Lode Chapel. Our Mothers' Union meetings are held every third Thursday in the month at 2.30 p.m. in Lode Chapel, and should you wish to join us, you would be most welcome.

GILES BREAM PENSION FUND

Applications are invited from widows or widowers to receive a quarterly pension from the above charity. Applicants must be of good character and have lived in the Parish of Bottisham at least seven years. Please contact the clerk to the trustees for an application form. All applications will be treated in the strictest confidence.

Clerk to the trustees; Coral Hatley, 29 Mill Road, Lode, CB25 9EN • e-mail: coralhatley@gmail.com Tel: 01223 811457

SPANISH FOR GCSE STUDENTS



Native Spanish speaker

and

A-level student

offers

Spanish conversation

and support to GCSE students

Phone *Clara*

on:

07799057572

Dale Parker

*Landscape Gardener
and Tree Surgeon*

Turfing, Seeding,
Planting, Patios,
Drives and Fencing

Trees –
Topping, Lopping,
Shaping and Felling
Hedge Cutting

FREE ESTIMATES

Tel: 01284 717107
Mobile: 07799 671010

WHITSTABLE Kent Coast

Three bedroomed
Victorian Terrace available for
self-catering holidays

Situated in the heart of the
conservation area
two minutes stroll from shops,
restaurants, beach
and the harbour

Phone 811447
dawnrahman1@hotmail.com

D.S. FREEMAN Painters & Decorators

- Residential & Commercial
- Interior & External
- Fully Insured
- All Aspects Undertaken

duncanfreeman@hotmail.co.uk
Tel: 01223 812920
43 Mill Road, Lode, Cambridge CB25 9FN

PETER FISHER

CARPETS - WOODS - VINYL



A wide range of floorings supplied and fitted.
Please call for a free estimate and select in your home.

Tel: (Bottisham) **01223 811321**
Mobile: **07879 494 685**

Great service for
30 years

A. J. PRINCE Painter and Decorator Interior and Exterior



*No Job too large or small
Free estimates and advice*

24 Hall Lane Burwell
Tel: 01638 741 420
Mob 07880 622933

Carpentry Services TONY MARTIN

Over 30 years experience

*Any carpentry jobs
undertaken — BIG or small*

Call Tony
for a free estimate
Tel: 01223 812786
(Bottisham)
Mobile: 07767475987

Finishing Touch Tel: 01638 744377



FINISHING TOUCH

- * Gifts for all occasions
- * LAZYJACKS Stockist

Open
Mon - Fri, 10am - 5pm
Sat, 10am - 4pm

59 High Street, Burwell
Tel: 01638 744377

Winter Clothing and Footwear for the season now in.

From 1st January 2014 Cambridge CAMTAD (Campaign for Tackling Acquired Deafness) changes its name to CAMBRIDGESHIRE HEARING HELP. There will be no change to services.

CAMBRIDGESHIRE HEARING HELP

CAMTAD

We now run hearing help sessions in 42 venues in Cambridgeshire. At these drop-in sessions volunteers offer advice on any aspects of hearing loss and maintain NHS hearing aids by distributing batteries, cleaning and "retubing" aids. There is also a service to housebound people and those living in residential care. It is not generally recognised that hearing aids need maintenance every 3 - 6 months when the small plastic tube that links the mould with the mechanical part needs to be replaced to maintain the quality of sound. By keeping hearing aids in good condition with routine maintenance available locally, hearing loss becomes a minor inconvenience not a major barrier to communication. This helps to keep people sociable and makes a significant contribution to their quality of life. We also offer a telephone advice service, talks, training and information on hearing help assistive technology.

From 1st January 2014 our website will be www.cambridgeshirehearinghelp.org.uk and we can be contacted by e-mail on enquiries@cambridgeshirehearinghelp.org.uk. Our telephone number will remain the same 01223 416141

Cambridgeshire Hearing Help Charity Registration No 1154071

Bottisham Meeting Point

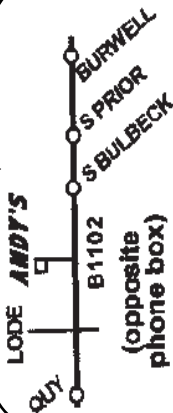
The Bottisham Meeting Point has been in existence since November 2007. We meet on Wednesday mornings in the Day Centre at Queen's Court from 10.30 am - 12 noon.

When Meeting Point was set up the vision was that it should be 'A place where you can meet old friends, make new friendships, relax, chat and enjoy coffee, tea, biscuits and cake in a friendly atmosphere'. This is what it is.

There is no charge for tea or coffee but people are free to make a donation if they wish. As a result of people's generosity we have been able to give gifts of money to Queen's Court Comfort Fund and other charities. We are very grateful to Queen's Court for allowing us to use their facilities free of charge and to the willing band of volunteers from Bottisham who serve coffee and tea each week.

Come and join us for coffee or tea on Wednesday mornings from 10.30. Everyone is welcomed whether they come regularly or just occasionally.

Helen Cole



ANDY'S

MEN'S HAIR DESIGN LONGMEADOW

55 LONGMEADOW • LODE • CB25 9HA
(opposite phone box)

Appointments

01223 812444



The Hairdressing Council
State Registered Hairdresser
Master Craftsman

EASY PARKING

Copy deadline for next issue is 14 January.

Please send material to the editor at cresset@bottishampc.org.uk

Have you thought of advertising your business in *The Cresset*?
Email the Editor for details: cresset@bottishampc.org.uk

ARCHITECTURAL DRAWINGS

FOR

PLANNING & BUILDING REGULATION APPLICATIONS

NEW PROPERTIES, EXTENSIONS, LOFT CONVERSIONS ETC

CONTACT US now to arrange a **FREE** on-site meeting at your convenience to discuss your project.

ELY DESIGN GROUP

'Architecture by Professionals'

www.elydesigngroup.co.uk

01353 649649

mail@elydesigngroup.co.uk

Locally Brewed Beer

- the perfect gift?

We deliver our bottle-conditioned beers, in boxes of 6, from the brewery directly to Bottisham doorsteps.

See website for details of our real ales - www.craftybeers.co.uk

Brewed in GREAT WILBRAHAM

Jasmine

Chinese & Thai Food to Take Away

Telephone

01223 811642

Fish & Chips also Available

OPENING HOURS

Tuesday to Thursday 4.30pm-10.00pm.
Friday and Saturday 4.30pm-10.30pm.
Sunday 4.30pm-10.00pm

OPEN AS USUAL ON BANK HOLIDAYS

2 HIGH STREET • BOTTISHAM •
CAMBRIDGE CB25 9DQ

K.J.P.

Building/Maintenance



Including:

Design, landscapes, patios, fencing,
gardening, decking, painting,
decorating, tiling, all interior work,
etc.

**Tel: 01223 812021 or
mobile 07799 504043**

R. BRISTLEY Est. 1974
9 Collings Place, Newmarket CB8 0EX

BRUSH ELECTRIC SWEEP

- All Chimneys Swept
- Solid Fuel, Oil and Gas
- Cows, Nets and Pots Fitted
- Firebacks Replaced
- Carpets Cleaned
- Competitive Prices
- Very Clean
- Family Business
- Public Liability Insurance



Telephone:
Newmarket (01638) 662439

JCM

Property Maintenance Ltd

**For the best in
Renovation,
Redecoration
& Repair**

Contact Joel Clarke-Morgan
On 07885 586229
or e-mail; JCM@weyr19.co.uk

www.jcmpropertymaintenance.co.uk
47 Edinburgh Rd, Newmarket CB8 0QE

Bottisham WI

Barry Kaufmann-Wright a Wildlife Consultant gave a talk and slide show at the November meeting on the Landscape and Wildlife in the Arctic. His great love is wildlife photography and he has thousands of slides. At the moment he has not gone digital! Most of the slides he showed were from his cruise to the Arctic, finishing in Spitzbergen midway between Norway and the North Pole where the sun does not set from April until August we saw a slide of a Polar Bear walking along the shore at the edge of the ice. In this area these will be the first mammals to suffer from Climate Warming. The melting ice means they will lose their habitats and subsequently their food source.

Barry achieved his ambition of taking a photograph of the forked tail of a whale, as it dived. The first attempt was ruined by a lady stepping in front of his camera, even though it was on a tripod. We saw Arctic Terns and learned about their migration patterns flying thousands of miles from Pole to Pole, an amazing feat for such small birds. They lay their eggs on the Arctic Tundra, where the soil is only 2 inches thick before reaching the ice of the permafrost. The eggs and young chick's feathers are speckled, which is good camouflage from predators, as the Tundra is covered with lichens of different colours. At this stage the adults leave their young and fly off again on their migration routes, leaving their young to fend for themselves. Some parents!

We saw slides of Little Auks, Reindeer, Arctic Fox (white in winter), Walrus with huge tusks, Huskies, Glaciers and Icebergs to name a few.

This was a talk which was interesting and informative, illustrated with beautiful slides. We learned a lot about the Arctic landscape.

The next meeting will be in January on the third Tuesday evening of the month (as always.) at 7.30 pm in the lecture room at the Village College, New members are always welcome.

WEA News

As one of the few men attending Karen Hore's series of lectures on "the Art and Craft of Film Costume", it came as no surprise that the ladies in the audience were best equipped to identify the decade, or century, from which costumes came in the film clips that we saw. It was also obvious that in the early days of cinema, a film was the best method of introducing the public to the current fashions of the time. Fashion designers got great publicity and the stars in the films were the fashion models of the day. All good for business at a time before the advent of television!

It is interesting to note that for at least the first half of the twentieth century, the nationality of people from different parts of the world could often be identified by the clothes they wore. This unfortunately, is no longer the case. Our global society and modern communications have changed all that!

However, you will be able to check out what the working man and woman wore in days gone by when Honor Ridout commences her series of lectures entitled "WORKING LIVES". Join us at the British Legion at **10.00am on the 16th of January**, and find out how our ancestors in the last five centuries made a living, their circumstances and the changes produced by economic and technological change, seen through diaries, inventories and letters as well as public and private reports.

Gerry Cowley



The Carpenters Arms

Brew Pub & Restaurant Great Wilbraham

A Cambridgeshire Top Pub
4 awards: Food, Wine, Beer & Top 10 UK Value

- ▶ Award winning, French influenced fine dining
- ▶ Cosy bar - enjoy a pint, a chat, & bar meals

New Our own real ale - brewed on the premises!

Crafty Carpenters Cask, Sixteen Strides
Sauvignon Blonde



For more information, sample menus, prices and opening times: Or Scan Code
Website: www.carpentersarmsgastropub.co.uk ☎ 01223 882093

The Carpenters Arms, 10 High Street, Great Wilbraham, CB21 5JD



Ristorante Il Piccolo Mondo

Telephone 01223 811434 for reservations

85 High Street Bottisham Cambridge CB25 9BA

OPENING TIMES
MONDAYS & TUESDAYS - CLOSED
WEDNESDAYS / THURSDAYS / FRIDAYS / SATURDAYS
12.00- 2.30pm & 6.30- 9.30pm
SUNDAYS 12- 2.30pm

Closed for a break from 1st January, reopen Wednesday 22nd January 2014



THE WHITE SWAN

AT QUY

MODERN BRITISH FOOD IS BACK ON THE MENU
(NOT TO MENTION THE GREAT LOCAL BEER,
EXCELLENT WINE AND GOOD COMPANY)


OPEN DAILY FROM 12:00
(FOOD SERVICE FROM 12:00-3:00PM AND 6:00PM TO 9:00PM)

- ◆ SEASONAL BAR MENU
- ◆ FULL RESTAURANT MENU
- ◆ WEEKDAY LIGHT BITES
- ◆ FANTASTIC SUNDAY ROASTS
- ◆ CASK CONDITIONED ALES
- ◆ PRIVATE DINING AND FUNCTIONS
- ◆ BOOKING NOW ADVISED FOR SUNDAYS AND RESTAURANT



MAIN STREET, STOW-CUM-QUY,
CB25 9AB TEL: 01223 811821
WWW.WHITESWANQUY.CO.UK
INFO@WHITESWANQUY.CO.UK

The Six Bells Fulbourn



9 High Street, Fulbourn
Telephone 01223 880244

*Home cooked fresh food
Open for lunches every day,
evening meals Tuesday to Saturday*

*Separate function room
catering for weddings, parties and other
occasions*

Resident music - Hugo's Disco

*Traditional Jazz
every first and third Wednesdays with the
Riverside Jazz Band*

Senior Citizens Lunches every Thursday

*Fresh Fish Night - Thursday
Eat in or Take-away*

Curry Night - Fridays

*Lindy's Quiz Night - Thursdays
Starting at 9.15 pm - Prizes to be won*

*Large selection of real ales
Wines from around the world*



N.C.S.

**BRUSH ELECTRIC SWEEP
ALL CHIMNEYS SWEPT**

- BIRDS NESTS REMOVED
- OIL & GAS BOILERS
- SOLID FUEL, STOVES FITTED
- SMOKE PRESSURE TESTING
- INSECT MESH, POTS, COWLS
- FLUE LINERS SUPPLIED & FITTED
- BIRD GUARDS & TERMINAL FITTED
- GUTTERS CLEANED & REPAIRED
- GENERAL PLUMBING WORK

**FOR FREE QUOTE CALL
07824 727277 or 01638 662760**

EMAIL
NCS.NEWMARKET@YAHOO.CO.UK
WEBSITE
www.ncsnewmarket.co.uk

*Send text or e-mail for 10% discount
Answers within an hour. • Waiting time approx. 1-2 weeks

**VERY CLEAN • Public liability insurance
- Competitive rates -**

MOLE CATCHER FOR HIRE



**30 YEAR EXPERIENCE IN
MOLE & RABBIT CATCHING
USING ONLY TRADITIONAL METHODS**

NO GASSES OR POISONS

**FROM SMALL BACK GARDENS
TO FIELDS & PADDOCKS**

**MEMBER OF THE BRITISH TRADITIONAL
MOLE CATCHERS ASSOCIATION**

COVERING- CAMBRIDGESHIRE & SUFFOLK

TEL:- 01638 741616 MOB:- 07756 495649

HARRISONS OF BURWELL LTD

(Previously N. E. & S. Harrison)

Plumbing and Heating

FREE ESTIMATES GIVEN

Gas Boiler Servicing

Clarence House, 7 Ness Road, Burwell, Cambs CB5 0AA
Telephone: Newmarket 01638 742873 - Mobile 07932 773515
e-mail: nigel.harrison@ntlworld.com
 C.O.R.G.I. Registered



HAYDEN

THE CLEANING SPECIALIST

WOULD YOU LIKE YOUR CARPETS
OR UPHOLSTERY CLEANED?

HAYDEN IS LOCAL TO THE AREA,
OFFERING FREE QUOTATIONS
AND ADVICE.

MERRYWOOD
 8 LODE RD., BOTTISHAM CB25 9DJ
 01223 813766 OR 07919 561665

BOTTISHAM GARAGE

MOT VEHICLE TESTING STATION
 SERVICE AND REPAIR CENTRE
 DIESEL AND PETROL VEHICLES

Free minor adjustments *Free re-testing*

"LOOK WHAT WE OFFER YOU"...

- Same day repair where possible
- Servicing on most makes of vehicle
- Free estimates, Welding Specialists
- Air Conditioning Servicing
- Tyre check - no charge
- All work guaranteed
- Fast, friendly and professional
- Courtesy car

10 Tunbridge Lane, Bottisham
01223 811666

LINCE & HOSTLER

YOUR LOCAL PAINTERS & DECORATORS

*With over 20 years experience we
pride ourselves in offering an
exceptional quality of workmanship
at a reasonable price*

NO JOB TOO BIG OR SMALL

- ✦ Domestic and Commercial Work
- ✦ Interior and Exterior Painting
- ✦ Coving Supplied & Fitted
- ✦ Specialist Painting
- ✦ Wallpapering
- ✦ Tiling

**Call now for a free no obligation
estimate...**

01223 812 227 / 01954 211 673
07952 130 571 / 07952 130 570

k-domestic electrical solutions

your local electrical service of choice and recommendation

**24hr
CALLOUT**

Karl Howe
01638 610438 M: 07541 008613
 Email: enquire@k-elec-solutions.com Website: www.k-elec-solutions.com

Fully qualified Part P and 17th Edition

City & Guilds Qualified

EAL

LEO

Under Floor Heating

Voltage Optimisation

- Complete installations & rewires
- Small and large alterations
- Lighting
- Internal & External work
- PAT testing
- Periodic Inspection & Reports
- Full Inspection, Testing, Verification & Certificate Issue

PC Problems?

- Can't connect to the Internet?
- Got a virus? Lost some data?
- Can't send an email or attachment?
- Printer stopped working?
- Want a wireless LAN?
- Worried about security?



"IT MAY BE TO COME!"

Let me come and sort it out for you.
Fast and friendly service,
with everything explained.

Sensible rates - most software is free!
Practical tuition also available.
20 years PC & Mac experience.

Phone **Jeff Mochridge** on 01223 811609
or 07730 760892 (new number)

BURWELL COMPUTERS

We provide a full range of computer repairs and information technology support services to businesses and home users.

- VIRUS & SECURITY • EMAIL & INTERNET
- BROADBAND • WIRELESS • ROUTERS
- NETWORKS • SERVERS • UPGRADES
- REPAIRS • NETWORK CABLING

Tel/Fax: **01638 742702**

Mobile: **07901 556895**

support@burwellcomputers.co.uk
www.burwellcomputers.co.uk

Professional Cleaning of Carpets,
Upholstery, Rugs & Leather

Safeclean®

The finishing care specialists from GUARDSMAN

Safe Organic
Cleaning



- Organic based cleaning solutions
- Allergy-Out anti allergy treatment
- Guardsman anti-stain protection
- Spot cleaning & stain removal
- Free advice & estimates

Safeclean Cambridge Ltd
08700 465 528
www.safeclean.co.uk

SANICLEAN

DRAIN & PLUMBING SERVICES

R. BRISTLEY Est. 1974
9 Collings Place, Newmarket

- **Drains Unblocked Fast**
- **Toilets, Baths and Sinks**
- **Guttering and Downpipes**
- **Drain repairs and CCTV Surveys**
- **High Pressure Water Jetting**
- **Domestic and industrial**
- **All Work Guaranteed**

Telephone:
Newmarket (01638) 662439
Mobile 07970 038404

footprint Signs & Graphics

The Complete Local Signmaking Service

- All aspects of Vehicle Signage
- Window Graphics & Etching
- Safety Signs
- Shop Fascia's
- Labels, Stickers & Magnetic's
- A-Boards
- Banners
- Full Colour Digital Printing
- Solar Films & Etched Vinyl

Have you a picture you would like on Canvas?

07900 606400
01223 813761

www.footprintsignsandgraphics.com
info@footprintsignsandgraphics.com

ANDREW HULME

Chartered Accountant



12 Tanbridge Lane
Bottisham
Cambridge Tel. 01223 811323
CB25 9DU andrew@hulmeacc.co.uk

- Accounting
- Bookkeeping
- Club Accounts & CASC Assistance
- VAT Returns
- Management Accounting
- Personal Tax
- Business Advice

J&J DRAKE

Fully approved electrical contractor

- All Work Certificated in Accordance with NICEIC
- Free no obligation quotations
- All aspects of electrical work undertaken such as re-wires, Periodic test and inspections, maintenance calls, New build Installations.
- However small you may consider your job it will be treated with the same attention to detail as every one of our jobs.

Your Local Electrician

Unit 24, Hall Barn Road Industrial Estate, Isleham, Ely, Cambs. CB7 5RJ
Contact us on: 01638 781567 / enquiries@jandjdrake.co.uk

Sure Start Children's Centres



What's on for **FREE** for families with children under five at Bottisham Children's Centre, 19 Lode Road, Bottisham CB25 9DL

Breast Friends Every Thursday 11.00am to 12.00pm. Support for breastfeeding Mums. Just turn up!

Sun Dads! For dads and male carers and their under 5's. Every third Sunday of the month at Burwell Sports Centre 10.30 to 12.30pm. With bouncy castle, ride-ons and free bacon butties! No need to book, just turn up!

Multi-sports Every Friday 10.30am to 11.30am at Burwell Sports Centre. A variety of different sports to keep your under 5 fit and healthy. Just turn up! Term Time only.

Well Baby Clinic Every 1st and 3rd Tuesday of the month 12.30pm to 2.00pm. Have your baby weighed and have a chat with a Health Visitor for any concerns.

Little Movers Every Wednesday 12.30pm to 2pm at Bottisham Children's Centre. Birth to 2 year olds. Come have a coffee and chat with a health professional and Children's Centre staff. Just turn up!

Stay & Play Every Monday 10am to 12noon at Bottisham Children's Centre. Free play session, support and information. Just turn up!

For more information call us on 01223 507152
bottishamchildrenscentre@cambridgeshire.gov.uk
www.cambridgeshirechildrenscentres.org.uk



Ceramics Painting Parties

Sparkles is a mobile ceramics painting party service.

- 1 Choose your venue
- 2 Select your package
- 3 Sparkles will run your ceramics painting party
- 4 Your masterpieces will be collected, glazed & fired
- 5 Your finished pieces will be wrapped & delivered back to the Party host

To book a party call Emma on: 813323
Or email us at eddenston@sky.com
Visit our Website at emsparkles@vzwweb

old school house day nursery






- Highly qualified, caring and dedicated staff team
- Outstanding Early Years Curriculum Inc. Yoga, French & Forest Kindergarten
- 2 Miles to Newmarket & A14
- Health promoting nursery
- Holiday and breakfast clubs
- Free term time only government funded places for 3 & 4 year olds

INVESTORS IN PEOPLE | Gold

QUALITY COUNTS
NIPPA ACCREDITED





69 High Street, Stetchworth, Newmarket, Suffolk, CB8 9TH

Come and see the difference....call 01638 507178 or www.oshdn.co.uk

Saffron Salt Supplies

- Water Softener Salt**
Salt tablets in 25 or 10kg bags
Block salt in 2x4kg packs
- Dishwasher Salt**
Granules in 10kg bags
- De-Icing Salt**
White crystal in 25kg bags

delivery **FREE** to your door
visit our website for full listing
www.saffronsalt.co.uk
Place your order by phone
07980 581815 or email
info@saffronsalt.co.uk

STEPWISE FOOTCARE

Vivien Honeyborne-Martins
MA(Camb) BSc(Hons) MCPS HPC Registered



Clinic-based Chiropody/Podiatry

- Chiropody
- Biomechanical assessment
- Insole/orthotic therapy
- Children's foot problems

7 Swaffham Road,
Burwell,
Cambridge,
CB25 0AN

Tel: 01638 741973 / Mobile 07980 286876
stepwise-footcare.co.uk vrmpost@hotmail.com



Showroom opening hours:
Mon to Thurs; 9am—4pm
Fri and Sat; 10am—2pm

23 years of British expertise and craftsmanship
Come and buy direct from our factory
Beautiful fabrics ~ superb quality ~ great prices
Friendly efficient fitting service.
Curtains ~ Blinds ~ Poles ~ All soft furnishings

Enjoy free parking, outside our showroom, just off the A14
2B Swan Lane Business Park, Feting, Newmarket, CB8 7FN

Tel: 01638 578700 www.starcurtains.co.uk



R & S SERVICES

PICTURE FRAMING

For all your framing requirements including
Tapestries, Notice Boards, Certificates,
Ready-made Frames and Mount Cutting

Rear of:
128 Fulbourn Old Drift
Cherry Hinton
Cambridge CB1 4LR

Proprietor:
Roy Northrup
Tel: (01223) 243077



Alan Heath ADI



Fully Qualified Driving Instructor.

Dual Control Car Very Competitive rates

All Enquiries: 01223 811181 or 07824 905177

TILING • DRYLINING • ALL BUILDING WORK •
CARPENTRY • SCREEDING
LIME PLASTERING • PAINTING & DECORATING

GLENN WARDER

Tel. 811991 Mob 07734 904050
E-Mail: Completeplastering@msn.com

Free estimates
Reliable Service



Steamed Up
Windows?

Conservatory
cracking-up?



Handles and Hinges
too hard to handle?

Think sorting it is going to cost a fortune?

Think again.



WindowGeeks™

WE REPAIR & REPLACE windows, doors & conservatories

WindowGeeks don't fog double glazing They Fix It!
SPEEDY, AFFORDABLE, NO FUSS, NO MESS

10 Year Guarantee On The Glass
No Minimum Order
No Credit Card Charges

Contact your local WindowGeek today for a
free, no obligation quote

0800 5 118 007

www.windowgeeks.co.uk

DG COMPLETE PROPERTY MAINTENANCE



CARPENTRY
PAINTING/DECORATING
FITTED KITCHENS
TILING/BATHROOMS
GLAZING
PATIOS/PATHS
FASCIAS/GUTTERING
DRAINS

desgoody@gmail.com Mobile: 07542 757234
Tel./Fax: 01223 811911

PUBLIC MEETING

Parish Council will be hosting a public meeting to discuss the proposal by David Wilson Homes to increase the number of homes off of Bell Road from 50 to 150 houses.

A representative from East Cambs District Council will also be in attendance.

**Thursday 16th January, 7.30pm,
Royal British Legion Main Hall**

This meeting is for all residents of Bottisham and Parish Council encourage as many to attend as possible.

JEFFREY D. WICK
PAINTER / DECORATOR
INTERIOR / EXTERIOR


30 YEARS EXPERIENCE
FREE ESTIMATES
OAP Discount

Reliable & Professional service

Phone: 01223 813762
Mobile: 07788 165676

11 Heath Road
Swaffham Bulbeck
Cambridge
CB25 0LS

www.alecslearn2drive.co.uk



TEL 01223 813161
Mob 07906 363121

Parish Council Notes

The traffic calming for Bell Road and Tunbridge Lane will be going ahead in 2014. We had been told many months ago that work would start in December 2013 but this seems more likely to be March 2014 now.

We have been having on-going correspondence with David Wilson Homes regarding the footpath around the moat at Ox Meadow as Parish Council are not convinced that maintenance work has been completed and we have asked for a meeting on site.

A resident had asked about having a bus stop sign erected on the High Street near to the restaurant/church. This is an official stop but there is no sign present and as cars were parking here the bus was not always stopping. The County Council have agreed to put a sign up and are currently looking at the location where this would be placed as we had concerns that there is a slight bend in the road. The brick bus shelter in the High Street has now been re-painted and the wooden one opposite Beechwood Avenue repaired. The bus shelter on the A1303 will also be repaired shortly.

You will have read in last months Cresset that David Wilson Homes decided that they want to alter their proposed planning application for houses off of Bell Road from 50 to 150 houses. Councillor Bryant has met with East Cambs District Council Planning Department who were surprised and not at all happy with the change to the proposed application. There is, what is known as an Examination in Public scheduled for February 2014. This is where a Government Inspector considers the local plans for the District and decides whether future housing projections are accurate or whether more housing needs to be allocated. David Wilson Homes will go to the Examination in Public to argue their case that they believe there is a need for a greater level of housing. East Cambs have assured us that if they have to provide additional housing in the district then this could easily be absorbed at Soham and Ely as large developments are currently taking place there and an extra 100 houses will not make a difference. The District Council do agree that Bottisham does not have the infrastructure to support 150 houses but the Government Inspector will make that decision. East Cambs will complete the Masterplan process with or without David Wilson Homes. They will review the Masterplan in light of comments made at the Consultation. The County Council and English Heritage had some objections to how the plans encroached on the ancient monument. They will take these comments on board, make amendments and then send to us. A public meeting has been arranged for 16th January, 7.30pm at the Royal British Legion which Katie Child from the Planning Department at East Cambs District Council has agreed to attend. We may have more information by this stage as the District Council will have met for discussions with David Wilson Homes. This meeting is for all residents of Bottisham. This is your village and it is important that you know what is or could be happening. Please put the date in your diary, it would be good to see as many residents as possible.

We were pleased to welcome some residents to the Parish Council meeting in December. Before the meeting began they had the opportunity to ask Parish Council some questions. There is an open forum at the beginning of our monthly meetings which are held the first Monday of every month where residents can speak to parish councillors and this is something we wish to encourage. The first meeting of 2014 will be Monday 6th January, 7.30pm in the Poppy Room at the Royal British Legion. I hope to see some new faces there.

PLANNING NOTES

13/01050/FUL 1 Tunbridge Lane, 1.5 storey rear extension, NEW APPLICATION

Claire Fullwood – Parish Clerk

MOBILE FOOT HEALTH PRACTITIONER

For professional treatment of ALL foot conditions including:

- Toe nails trimmed & filed
- Corns and hard skin removal
- Ingrowing toe nails
- Athletes foot & fungal nail infection
- Verrucas & warts



For an appointment in the comfort of your own home contact:

HELEN BRATTEN, MCFHP, MAFHP
Tel... 01638 724865 or 07776 172056

Member of the British Association of Foot Health Professionals

Hilton Park Care Centre

BARCHESTER HEALTH CARE

We cater for:

Young Physically Disabled • Elderly Nursing • People living with Dementia • Mental Health

A Centre of Excellence • Newly Refurbished Spacious Accommodation

Ensuite with all Amenities • Beautiful Views • Spacious Grounds with Wildlife

Wide Selection of Delicious Food • 24-hour Qualified Staff on Duty

Specialised Equipment: Hoists, Assisted Baths, etc.

Activities Tailor-made for the Individual • Nursing Care Planned using the Activities of Daily Living

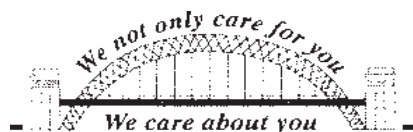
Open Visiting Times

Our Home is Your Home

Tel: (01223) 811256

Fax: (01223) 812692

Please contact:
Home Manager



Bottisham
Cambridge
CB25 9BX

East Cambs District Councillors' Notes

MORE HOMES

Since submitting its draft Local Plan to the appointed Government Inspector for scrutiny, the District Council has increased its 2031 target for the number of new homes to be built throughout the District by 15%. This is following a recent analysis by the seven local planning authorities in Cambridgeshire and the County Council. The Government requires local authorities to co-operate to set targets and a Memorandum of Co-operation has been agreed. The analysis had proposed a 30% increase for this District. The Council considers that the additional homes should eventually be in Soham and Littleport.

On 3rd December, it was announced to the Development and Transport Committee that David Wilson Homes had requested 150 homes to be built on the land east of Bell Road in Bottisham. This would be instead of the 50 that had been allocated in the draft Local Plan, and the subject of Masterplan work over the past year. This was greeted with dismay by the councillors and officers.

The Council will defend its position at hearings on the Local Plan with the Planning Inspector. It was pointed out that this land was within the Cambridge Green Belt and that our large developments should be located in or near towns in East Cambridgeshire, and not where they will depend on employment places and shops in Cambridge City or South Cambridgeshire.

COMMUNITY-LED DEVELOPMENT

The Council has prepared a Supplementary Planning Document to its draft Local Plan which sets out its policy on Community-Led Development. The 2011 Localism Act requires planning authorities to foster facilities which communities desire. The document sets out the Council's approach to planning applications and provides guidance. Local charities, groups and parish councils may wish to develop land within, or just outside, agreed development envelopes for open space, recreation, play areas, sports, affordable housing, community buildings, allotments, cemeteries, renewable energy schemes etc. Community Land Trusts are becoming an effective way to achieve such goals and the Council makes loans available to cover initial costs. Community Benefit Societies and Community Interest Companies may also provide such facilities.

AFFORDABLE HOMES ALLOCATIONS POLICY

45 Affordable Homes have been built in Bottisham over the past twelve years. These are under four different Housing Associations, for rent, or for shared ownership with the Association. None of these homes may be bought outright. There is also a legal agreement for 28 of them such that they must be allocated as they become available to those with local connections. This would mean someone, or a relative of someone, living or has lived in the Parish, or works there. If there remains a vacancy, nearby parishes are included. All further new Affordable Homes in villages in the District may be allocated in this way, even if they are built as part of wider schemes with homes sold on the open market. Considering the cost of renting or buying a private home, those on even quite high incomes may well be eligible for any of the 45 homes that become vacant. Please register with Home-Link, which also advertises available homes.

(ECDC continued on page 35.)



My love for dogs An alternative to Kennels

A personal, caring approach to dog care.

In our home, your dog will receive two hour-long walks every day as well as treats, socialisation with other dogs and the administration of any required treatments.

- o Fully insured and police checked
- o Licensed by Sth. Cambs. District Council.

For further details call Amanda on
07903 806750

Based in Steeple Morden near Royston.

BURY CATTERY

Offer
Full Boarding
Services for
Cats only

CAMBRIDGE
811945

MOVESFITNESS

Fit to live life – For the rest of your life!

Aerobic exercise with a difference

QUY VILLAGE HALL

Every Monday 8.00pm – 9.00pm

EVERYONE WELCOME!

£5.00 per session

Exercise really can be this much fun

Contact Mel Wilkes for more information: 01223 811100

Find me and Moves Fitness on Facebook



mal@movesfit.co.uk
www.movesfitness.com



Your friendly neighbourhood fitness class

NEW Dance Workout!



Botisham Sports Centre, Lode Rd
Thursday 7pm – 8pm
£5.50 Per Class
Suitable For All
Fitness Levels



Stimulated by the sparkles and passion of Bollywood, Belly Dance and being the main inspiration for Zumba, Bolly Fitness is the new way to shimmy shake and dance Bolly style! With all our instructors trained from India itself!! Come along to spice up your lives and get fit the fun way!

CLASSES RESUME ON JAN 10TH
explosionartsco@hotmail.com
Tel: 07951 959345
www.Explosionarts.co

(ECDC continued.)

ACTION ON ENERGY FOR CAMBRIDGESHIRE

There are many homes in the District still with inadequate heat insulation or inefficient boilers. This leads to high heating costs and carbon dioxide emissions. The Council has worked with other councils in Cambridgeshire to appoint a company, Climate Energy, which will assess properties, arrange loans and carry out the necessary improvement work. Many residents may benefit from free work, even if they do not own their home. The company has had to meet exacting performance requirements, which should give confidence to householders in a market which can be confusing and a financial worry.

Further details are on the District Council's website under Energy Efficiency. You may also call 0800 093 3303 or email info@actiononenergy.net or log on to www.actiononenergy.net.

Dist Cllrs Robert Stevens and Kevin Ellis

Copy deadline for next issue is 14 January.

Please send material to the editor at cresset@bottishampc.org.uk

Have you thought of advertising your business in **The Cresset?**
Email the Editor for details: cresset@bottishampc.org.uk

Red2Green SWAFFHAM BULBECK DROP-IN



Alternate Tuesdays, 2.00 – 3.45 pm
at Downing Court Community Lounge,
Vicarage Close, Swaffham Bulbeck

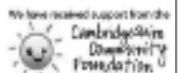
Spring Term 2014

7th, 21st January - 4th February - 4th, 18th March - 1st April

This is an informal drop-in. Come and play cards, scrabble or a game of your choice. Or bring your knitting, crochet or tapestry for a friendly afternoon meeting new people and chatting. **Cost: £1.50**

For more information please call 07827 966367

Everyone is welcome!



Red2Greenhouse Farm Shop

Bottisham Village College, Lode Road, Bottisham, Cambridge CB25 9DL

Follow signs via swimming pool car park to Community Garden

Opening hours : Tuesday to Friday 10 am—3 pm

- Fruit and vegetables (box delivery scheme available)
- Bread and pastries
- Bedding plants
- Jams, preserves and pickles
- Jewellery
- Bird boxes, ceramics
- Christmas Cards

Autumn Term 2013

13th, 24th September

8th, 22nd October

5th, 19th November

3rd, 17th December

We are a local charity working with adults with learning disabilities and pupils from Bottisham Village College.

www.red2green.org • 01223 813 650 / 811 662 • info@red2green.org

Registered charity no 1112425

T
P
M



Taylorred
Property
Management

Your letting property is a key asset in your life, ARE you getting full value from it?

If you are not and you want a service that will release it's full potential and a free rental appraisal then come to the people that are able to offer you a "Taylorred" package to suit your needs.

We offer a full comprehensive property management service, just as though the property was our own all at affordable rates to suit you:

FREE Energy performance certificate

FREE Initial letting fee

For your own personal service contact

Steve Taylor on 01638 741717 or 07753 272765 or email steve@taylorredpm.co.uk

9 Station Gate, Barwell, CB25 0BZ

Bottisham and District Gardening Club

We were fortunate that Rodney Tibbs was able to step in at the last minute and show us slides of Cambridge College Gardens all situated within a 5 minute walk from Market Square when our booked speaker was unable to attend. He visited the gardens, several of them of a couple of acres in seasonal order.

The Backs or Queens Road approach to Kings College is well known for its spring bulbs (an excellent free show) and Peterhouse has hosts of daffodils. This College also has several smaller gardens most notably a Japanese garden. There is a 300 year old wisteria in Christ College Master's Lodge garden and a mulberry tree in the Fellows garden where Milton sat to write his poetry. Kings College has the most wonderful hanging baskets and St John's has wide and well stocked herbaceous borders. Most of these are open to the public sometimes under the National Gardens Scheme. He had several amusing anecdotes and told us that most people have little knowledge of the beautiful gardens so close to the streets.

Our next meeting is **Tuesday 28th January when Stephen Poyser will talk about Honey from Hive to Table.**

Please come along to the Poppy Room, visitors are most welcome - we start at 7.30pm

Information and next years calendar of events can be found on our website www.bottishamgardeningclub.co.uk

Bottisham & District Gardening Club

Seed Exchange

Saturday 8th February 2-4pm

Poppy Room, Bottisham Royal British Legion

Please bring seeds to donate or swap — seeds saved from your garden or allotment or packets you are unable to use up — or just come along for a cup of tea/coffee and a chat.

Entry £1

Raffle

WI teas

A donation from proceeds will be made to the Poppy Appeal
Refreshments available – provided by Bottisham WI

For more details see www.bottishamgardeningclub.co.uk

Copy deadline for next issue is 14 January.

Please send material to the editor at cresset@bottishamipc.org.uk

Italian Native Speaker

Bachelor of Arts in
Interpreting and Translation
in English and French languages

Offers:

- Language Tuitions
- Proof-reading
- General and Technical Translation
- Exams Preparation

From £15 per Hour

**Call Daniela On:
07940 541 558**

Little legs of Lode Montessori Nursery



We have spaces for children aged from
2 years onwards each morning in term time.

The Montessori method allows children
the freedom to be creative, to learn and to
develop at their own pace in a calm
environment.

Please contact Sharon for a prospectus
or to arrange a visit.

sharon.maskall@virgin.net
Tel: 07572 121463

EXPERIENCED TEACHER

Providing tuition for English
GCSE and beyond

Phone
Judy Metliss 811119

QUALIFIED LANGUAGES TEACHER

Available for tutoring
FRENCH and **SPANISH**
to
GCSE and A-Level

Resident in Bottisham

Contact **Lucy Beharrell**
Tel: **01223 811427**
Mob: **0774 552 1204**
E-mail: lucy@yates.net

GCSE Maths Tutor Ben Horwood MA

22 Woodditton Rd
Newmarket
01638 662079
07753 264135

Sales, Wants and Swaps



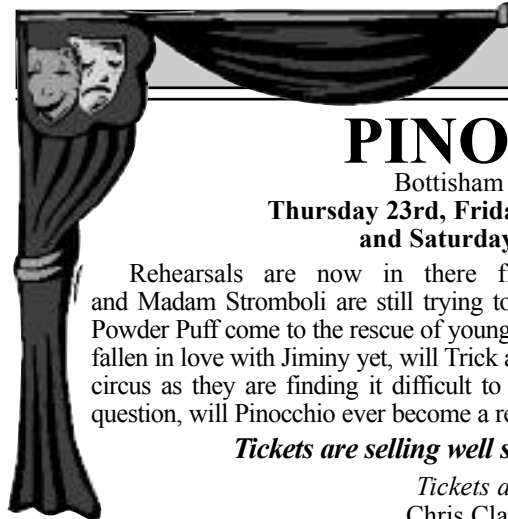
IF YOU HAVE ANYTHING TO SELL OR WANT TO BUY OR EVEN TO SWAP, THEN THIS PAGE IS YOURS TO USE. Please send details of item, price and landline phone number to the Editor at the Cresset. You can e-mail details to Cresset@Bottishampc.org.uk. Post them to 94 High St. (or put them through the letterbox). Alternatively you can telephone 811402 and leave the details. Entries by 12th of the month for next months issue. Max 5 items.

DESCRIPTION	PRICE	TEL
***** Relisted items with corrected phone number *****		
*Various virtually new Next and M&S light fittings	Phone	*813867
*Ladies 'Rotary' watch Still in box. Cost £135	£50	*813867
*Sony Bravia LCD Digital TV 15" Ideal for Bedroom	£50	*813867
*Toshiba 20" LCD Digital TV Excl. condition	£50	*813867
*Panasonic VCR Player excellent condition	£30	*813867
Carl Lewis Air Walker - Total body workout, As new. Buyer collects	£80.00	811157
5 pairs Gold Velvet (not velveteen) curtains, Various sizes. All lined	£50-80	811157
'The World at War' on VHS video. complete Readers Digest boxed set. 26 videos in 13 very attractive red boxes.	Free	812479
Napoleonic soldiers - hundreds of plastic models - 1:72. soldiers, a proportion of horses and some canon. Nearly all unpainted. A proportion mounted on cardboard in various numbers (egg 4s,5s,6s etc)	£30	812479

WANTED

Garage or secure off-street parking wanted to rent in Bottisham 466255

Bottisham Players



PINOCCHIO

Bottisham Village College,
Thursday 23rd, Friday 24th at 7.30pm January
and Saturday 2.30pm & 7.30pm

Rehearsals are now in there final few weeks, and Wanda the Witch and Madam Stromboli are still trying to ruin the show, can the Pantomime Fairy Ms Powder Puff come to the rescue of young Pinocchio and his family, has Polly patchwork fallen in love with Jiminy yet, will Trick and Tease carry on with their idea of joining the circus as they are finding it difficult to work for Madam Stromboli, and the ultimate question, will Pinocchio ever become a real boy! *Come and find out!*

Tickets are selling well so don't wait it may be to late!

Tickets available from:
Chris Clarke Hairdresser
Bottisham Post Office, Tina's of Burwell
and our box office on 01223 811033

Fed up Painting Your Roofline?

Does your roof suffer with any of the following?
Flaking Paint - Rotten Timbers - No Ventilation
Blocked or Leaking Gutters - Nesting Birds
Over 10 Years Old?



Stop! Replace it now
Replace it with long-lasting, highest quality fascia, soffits & cladding with a 50 years product guarantee
Full replacement - no capping over
Ventilation, guttering, downpipes

CALL NOW for your FREE, advice, survey and no obligation quotation

01223 258049

PROJECTS 4 ROOFING

www.projects4roofing.co.uk

REGISTERED MEMBER

Electrician J.W.Electrical

**Competitive Prices
Free Estimates
Fast Friendly Service
Part P Approved for
Building Regulations**

**07804 896861
01223 574262**



**NICEIC
DOMESTIC
INSTALLER**

ALAN R. COOPER

BSc(Hons)Pod. M.Ch.S
Podiatrist/Chiropodist - Newmarket
(Est. RC Cooper SR Ch.1934)

Routine Chiropody & Home Visits
Ingrown Toenails by Local Analgesia
& Footwarts by Cryosurgery (freezing)
Briomechanical Assessment + Orthosis
Instruments sterilised by Autoclave

TELEPHONE 01638 662840
4 Market St., Newmarket CB8 8EE

GERMAN LANGUAGE COACHING

Native German Speaker
Qualified Teacher
Coaching to GCSE level

Karin Hulme 812669

jaze accountancy limited

Management Accounts
Statutory Accounts
Bookkeeping
Payroll
CIS
VAT
Personal Tax
Corporation Tax
Accountancy Systems
Company Secretarial Services

Competitive rates to save you time and money
Call Julie on 07801 735012
or
e-mail: books@jazeaccountancy.co.uk
www.jazeaccountancy.co.uk

Julie Swain is a Fellow Member of the Association of Accounting Technicians

Public Transport Matters

Happy New Travelling Year to you all! 'Destinations', the holiday and travel show at London Earls Court, takes place from 6-9 Feb. 2014. Discover thousands of travel ideas; tailor-make your next trip and book in confidence; exclusive travel offers and discounts; over 50 hours of free expert talks and advice. This show was always one of the highlights of my year when I worked at the Cambridge Tourist Office - so many free brochures! My new year resolution is to pursue the possibility of the 727 coach stopping on the A1303 as we do miss evening and Sunday services. No positive response so far. It would also be useful if the Cambridge City Sightseeing Bus, now, it seems, run by Stagecoach could provide the much missed central Cambridge circular service at a standard local price rather than the 24 hr. one for the whole tour

The cost of public transport is a problem and the costs for providers and customers are rising. Austerity Britain is apparently being driven back on to National Express coaches rather than the trains. The weather has helped too - during the October storms and train cancellations National Express carried 34% more passengers. They have also won the contract for the coach between Central London and Luton Airport and Aviva, who lost it, is suing the airport.

Rail and Coachcards do mean a saving on fares. Stagecoach have special weekly, etc. tickets too. National Rail enquiries (0845 748 4950) has a 'Cheapest Fare Finder' tool on its website. Association of Train Operating Companies is on 020 7841 8000. See also thisismoney.co.uk/commute.

Greater Anglia has had a draft cycle strategy out to public consultation and Lowestoft is to get secure storage facilities and the launch of a bike hire scheme.

Our latest venture into the public transport unknown was to travel to Norwich via Newmarket railway station, changing trains at Stowmarket and then on the fast London/Norwich express (very posh - buffet car, etc.!) to Norwich. Our actual destination was Sheringham and there were fairly convenient connections.

The 9 sides of print in The Times for the High Speed Rail (London-West Midlands) Bill seems to imply that this project will go ahead; indeed, there is now a call for an HS3 from Manchester to Scotland. We are urged to think and plan for the future. The Thameslink upgrade was originally called Thameslink 2000 which shows how these large-scale transport projects drag on. This could be 30 years but it is rather complicated - subterranean tracks from King's Cross, merging of franchises, an order for new trains with Siemens rather than Derby-based Bombardier. There is also a wrangle over who can run the Dover/Calais cross-channel ferries as Eurotunnel wants to run the maritime service,

MyFerryLink, too. This affects the P and O and DFDS services.

The Victorians believed that travelling at more than 30 mph would make the human body collapse. What would they make of the possibility of flying at 5 times the speed of sound? Lockheed Martin in the U.S. are developing the SR-72 the successor to the SR-71 - the Blackbird long distance spy plane. Dinner in Tokyo tonight anyone? New York for a bit of shopping in an hour? The former chief Concorde pilot doesn't agree - due to the practicalities of turnaround, maintenance, etc.

Rail info: 08457 48 49 50 Traveline: 0871 200 22 33

Happy travelling!

Paddy James

Copy deadline for the next issue is 14 January.

Please send material to the editor at cresset@bottishampc.org.uk

Body Image • Beauty • Tanning • Gifts 

We are a well-established
Beauty & Tanning Salon
Incorporating a Gift Shop

**Beauty Vouchers
Starting from £5**

SALON & GIFT SHOP OPENING HOURS
 MON, WED & THU 10am - 7pm
 TUE & FRI 10am - 6pm
 SAT 10am - 2pm

www.bodyimage-cambridge.co.uk
T: 01223 880 881 10A High St, Fulbourn, Cambridge CB21 5DH

L BOTTISHAM
SCHOOL OF MOTORING
 Tel: 811556

*All qualified instructors
with extremely high
1st time pass rates*

**PREMIER INVESTMENT MANAGEMENT
SERVICES LTD.**

INDEPENDENT INVESTMENT ADVISERS
 Authorised & Regulated by the Financial Services Authority

Specialist in Cash Isa's, Junior Isa's, Stock/Share Isa's,
 Investment Planning, Cash Deposit Reviews & Stock-broking Services

To arrange a free consultation ring **01223-882422** or email
pims@globalnet.co.uk or visit **www.pims-uk.com**

East Anglian Air Ambulance

News Release As well as beautiful countryside, scenic coast lines and thriving towns, the people of East Anglia have something else to be grateful for! The East Anglian Air Ambulance is delighted to announce that it is now operating a full night-time Helicopter Emergency Medical Service (HEMS). The HEMS team will cover all six counties covered by the East of England Ambulance Service between the hours of 5pm to 1am.



Achieving night flying approval couldn't be more timely. As the evenings draw in, and many of us are travelling to and from work in the dark, it is reassuring to know that should the unthinkable happen, the East Anglian Air Ambulance will be there to help.

This is new ground for the Civil Aviation Authority, the UK aviation regulator, as well as for the EAAA. To finally get approval for night-time missions took almost a year. It was then necessary for our pilots, paramedics and doctors to receive extensive training.

The aircraft had to be modified to accommodate working with night vision goggles (NVG). Lighting in the cockpit was changed and additional room was required to accommodate the pilot's NVG. It was also essential to install a more sophisticated navigation system; as well as a Power line Detection System, a Trakka searchlight for the undercarriage, and put fluorescent markings on all equipment!

And when all these modifications had been approved the actual flight testing begins! A very long and challenging process, but incredibly rewarding if it means we can help more people in East Anglia.

The EAAA is a 365-day helicopter emergency medical service which covers Norfolk, Suffolk, Cambridgeshire and Bedfordshire. With a medical crew highly trained in critical care, we bring the emergency room to the patient within 25 minutes and can then transport them to the most appropriate hospital if needed. Since our launch in 2000, we have attended over 12,500 life-saving missions.

For more information about the East Anglian Air Ambulance or to find out how you can support our work, please visit our website www.eaaa.org.uk

Cambridgeshire Fire and Rescue Service

HAPPY New Year! And why not make a New Year's resolution to help keep you and your family fire safe this year.



Firefighters at Cambridgeshire Fire and Rescue Service are encouraging people to make three New Year's Resolutions in 2014 – and stick to them!

- ✓ Make sure you have a correctly fitted working smoke alarm on every floor of your house and test it weekly.
- ✓ Check older relatives and friends have a working smoke alarm and test theirs regularly.
- ✓ Make a fire plan so you and your family know what to do in case a fire breaks out in the home.

To find out if you are eligible for a free home fire safety check, call 0800 917 99 94

E.J. DENSTON
KITCHENS & CARPENTRY
 All aspects of Carpentry & Joinery
 New Build 1st & 2nd fix carpentry
 Purpose made cupboards, wardrobes
 & Bookcases
 Kitchens supplied & fitted
 Renovations & small build works



BOTTISHAM 01223 813323
Mobile 07711578687

PAINTING AND DECORATING

PROPERTY AND GARDEN MAINTENANCE

CALL STEVE

on
01223 812434
 or
 Mobile 07445 459957

OvenPad
Cleaning Services

I will professionally & efficiently clean ovens, ranges, Agas, ceramic hobs, extractors, microwaves and BBQs.

It's a dirty job, why not give me a call?

Contact **Paddy Kelly** on
 Tel: 01638 742703
 Mob: 07752 631343
 Email: info@ovenpad.com
 Website: www.ovenpad.com

Morgans Hairdressers
 Tel: 01223 811646
Creative styling for all the family

- ✕ Creative cutting
- ✕ Colouring
- ✕ Perming
- ✕ Hair up
- ✕ Bridal packages
- ✕ Gelish nails
- ✕ Manicure & pedicures
- ✕ Facial waxing
- ✕ Eyebrow/ lash tinting & shaping

Open: Tuesday - Saturday, Wednesday until 8:00pm
 10 Henschel Court, High Street, Bottisham, CB5 9DQ

www.morgansbottisham.co.uk

Bottisham Sports Centre

Swimming Lessons

Adult & Child, Junior & Adult Lessons available at Bottisham.
 We have an excellent swim school that runs every school term. Monday, Tuesday & Thursday 4pm-6pm, Wednesday 4pm-5pm and Saturday 8:30am-11:30am.

Fitness Classes at Bottisham

Monday - Bootcamp, Spin & Zumba
 Tuesday- Aqua, Pilates, Circuits & Coach lane
 Wednesday - Bootcamp
 Thursday- Pilates, Aqua, Kettlebells & Yoga
 Friday- Bootcamp

Kids Activities

Kids Dance Tuesday 4pm-5pm
 Hot Shots Football Saturday 10am-11am

For more information on any class or activity please contact the centre. Or alternatively visit our website and take a look around. Look out for the Christmas opening times coming soon.

Bottisham Sports Centre
 Lode Road, Bottisham, CB25 9DJ Tel: 01223 811121
 Web: www.bottishamvc.org/sportscentre
 Email: sportscentre@bottishamvc.org





1st Bottisham Scout Group Hiring Service

Bottisham Scout Headquarters is available for hire for children's parties, dance lessons, meetings, keep-fit, jumble sales, drama, music practice sessions etc.

For hall hire contact Adam Paul

adampaul@bopenworld.com • 01223 813531 • MOB 07841 930065

We also have a trailer and a trailer tent available for hire.

For equipment hire contact Peter Terry: 812684

Copy deadline for the next issue is 14 January.

Please send material to the editor at cresset@bottishampc.org.uk



JANE NEWBURY EX ROYAL BALLET A.I.S.T.D. (C.B.) SCHOOL OF DANCING

Dance classes in Swaffham Bulbeck School Hall

MONDAYS

Nursery Movement — 3:00-3:30pm
Junior Ballet — 3:45-4:15pm

Junior Modern Dance — 4:15-4:45pm

Intermediate Ballet — 4:45-5:15pm

Senior Modern Dance — 5:15-5:45pm

Senior Ballet — 5:45-6:30pm

Ladies Ballet — 6:30-7:30pm

WEDNESDAYS

Dance Club A — 4:30-5:30pm

Dance Club B — 5:30-6:30pm

Adult Tap Class — 6:30-7:30pm

For further details please telephone **01223 812154**

Sab
the property specialists

Bottisham

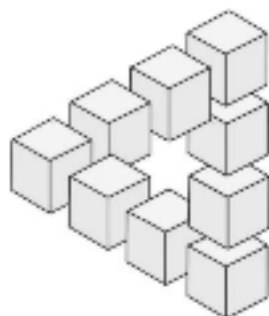
YOUR LOCAL AGENT

Personable and proactive service
Call for FREE advice and valuations

Selling, letting or investing
we are here to offer sound professional help

Call John Lomax on 01223 352170, 07712 664332 or 01223 813315 john@sab.co.uk

Cambridge 01223 352170	London 0208 4320032	Hertford 01992 501752	Royston 01763 242222	Langston 01954 781963
---------------------------	------------------------	--------------------------	-------------------------	--------------------------



INDEPENDENT FINANCIAL SOLUTIONS

- You know that the State Pension is not enough, but you don't know what it will provide!
- You want to save for your retirement, but you don't know what you will need!
- You wish to protect your family against financial disaster, but don't know what cover you require!
- You need to make your money work hard, but don't know which option is best for you!
- You would like to reduce your tax bill, but you don't know how!

-
- **Whether you own a company, are self employed, employed or retired, we can help!**
 - **We don't believe in adding to your problems.**
 - **We believe in clear and simple solutions.**

Let us provide you with an **INDEPENDENT** review of your financial situation.

Tel: 01638 615343

Fax: 01638 615342

E-Mail: qc@independent-financialsolutions.co.uk
Website: www.independent-financialsolutions.co.uk

Nowham Farmhouse, 16 Law Road, Bursell, Combs, CB25 9EJ
Partners: Quentin Cooke (authorised Independent Financial Adviser) & Alison Cooke

Fed up Repairing Your Flat Roof?

Does your roof suffer with any of the following?

Leaks • Moss Growth • Cracks or Bumps

Over 10 Years Old? Stop! Replace it now



You can't always see what is happening to your flat roof so, Replace it Once and for All with our unique RubberBond EPDM RubberBack Roofing System, guaranteed not to leak or crack and tough enough to stand on.

Money Back Guarantee

Proven to last over 30 years and guaranteed not to leak - or we'll give you your money back

CALL NOW for your FREE, advice, survey and to arrange a quotation

01223

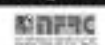
258049

PROJECTS 4 ROOFING

www.projects4roofing.co.uk



RubberBond
The UK's leading
EPDM roofing system



JEFF HUNT

01954 780 999

jeff@jmcarpetcare.com

- ✓ Carpet Cleaning
- ✓ Upholstery Cleaning
- ✓ Tile & Grout Cleaning
- ✓ Leather Cleaning
- ✓ Oriental Rug Cleaning
- ✓ Carpet & Fabric Protection
- ✓ Allergy Relief Treatment
- ✓ Odour Eradication
- ✓ Stain Removal
- ✓ Carpet Fitting

A Family business since 1980



Tom Griffiths

Plastering and Building Services

Plastering – Rendering - Dry Lining – Tiling – Decorating
Carpentry - Hard Landscaping - General maintenance

NO JOB TOO SMALL

Do your ceilings have 1970's Artex?

Do you want to bring them up to date?

For a quick, clean, flat finish give me a call for a free quote.

Tel 01638 482174 or 07765 411662

e-mail: tgbuildingservices@hotmail.co.uk



Remedial Massage
Effective Muscular
Pain Relief:

Sports injuries Sciatica
Frozen shoulder
Carpal tunnel syndrome
Back pain Plantar fasciitis

Treating the cause Not the
symptoms

Techniques: Myofascial Release, Soft
Tissue Release, Trigger Point Therapy

Jenny P Wilson, Gt Wilbraham
T:01223 881899
E:wilson_jp1@gmail.com



ANGLIA GAS & ELECTRICAL SERVICES



Sales - Service - Repairs - Installation

- Gas Boiler/Central Heating Systems
- Domestic Gas / Dual Fuel Appliances
- Nat. Gas/LPG Landlord safety checks
- Electrical /Portable appliance Testing
- Electrical and Plumbing Maintenance

Contact: Jim Perry
on
01638 741432 or 07768 856456

REFLEXOLOGY

For Health and Vitality

Reflexology has been
an effective treatment for:

Migraine • Back Pain • Infertility • Arthritis • Sleep
Disorders • Hormonal Disorders (Including PMT) • Sports
Injuries • Digestive Disorders • Relaxation • Stress Related
Conditions (exams,work,home,life) • Little people in
nappies! (BabyFlex) • Men and Women, young and old.

Jennie A Fatibene MAR MBFVEA

**Tel: 01223 811045
or 07821 611315**

****Gift vouchers available****

N & G Marsh of Burwell Engineers

For all your metalwork requirements

- ❖ Welding Services
- ❖ Handrails
- ❖ Security Bars
- ❖ Gates
- ❖ Mower Repairs
- ❖ Tow bars
- ❖ Metal Railings
- ❖ RSJs Supplies

Services to the Building Industry
Tractors & Agricultural Machinery
Repaired

Tel: 01638 741354 or 741 926

Thoughts of a Sports Nut

Happy New Year everybody! Let's get this first bit out of the way quickly as I'm desperate to stay off the topic of cricket for the time being. However, it would be churlish not to recognise the remarkable turnaround achieved by the Australians, pace-man Mitchell Johnson in particular, since their previous embarrassments at the hands of England. At the time of writing, the Ashes are slipping rapidly from the English grasp as our over-rated, complacent heroes of the summer slide towards another humiliating defeat in the Second Test. I dread to think what's to come, but I remember foreshadowing in the October Cresset that England's failure to demoralise the Aussies in the summer series could be costly... Good luck lads – you're going to need it!

It would seem that an element of luck will also be needed by the national football team if they are to progress beyond the first round in the forthcoming World Cup in Brazil. We have already been installed as third favourites (out of four – Italy, Uruguay, England, Costa Rica) to win Group D. Why is it that circumstances always seem to conspire against us? Not satisfied with sending us half way up the Amazon for our meeting with Italy in 99% humidity, FIFA has now decided to bring our kick off time forward to the afternoon in order to test our resolve under even more extreme conditions and to satisfy the mighty TV companies' desire not to over-disrupt the beauty sleep of their darling European audiences. Still, it could be worse. I don't suppose the Australians will be having much fun in a group with Spain, Holland and Chile!

In the meantime, as the Copa do Mundo approaches, the debates will be raging over which players should be in the English squad for the competition. After our autumn friendlies – defeats by Chile and Germany – one could be forgiven for thinking that manager Roy Hodgson has no idea, at this stage, who those 22 will be; but I suggest he is probably uncertain about only three or four places and used those matches to have a look at players who may be on the 'fringe'. Which begs the question: are the advantages of trying out squad players in friendly matches outweighed by the disadvantages of ignominious defeats putting team (and national) morale at risk?

Such discussions abounded on the journeys home from those Wembley games in November – a thumping return to earth after the encouraging performances against Montenegro and Poland in the qualifiers in October. Why does the England manager find it necessary to 'experiment' with players in full international matches? What does he really learn about 20 second string players chasing shadows for 90 minutes against superior opposition? Can he not gauge players' capability by watching them perform for their clubs, given that many Premiership teams are of higher quality than most international sides? And does it not devalue the 'cap' to hand them out to everyone who plays five minutes in an experimental friendly? Why not award those caps to the most deserving players fit and available on the day and give every game our best shot at bringing the winning mentality to the country? I can imagine the likes of the late Billy Wright and Bobby Moore turning in their graves at the comparative ease with which their caps records are being overhauled by the current generation.

All of which reminds me: I watched an outstanding advert for Premiership football in December when Everton took a point off Arsenal at The Emirates Stadium. As I sat in the Legion bar on a busy Sunday afternoon, marvelling over the ball control, movement, fitness and teamwork of both sides, it struck me that, for the most part, I couldn't tell one player from another. Here were two teams of foreigners playing a continental style of football – an extremely clean game, I have to say – and the power and pace of the players was

(Sports Nut continued on page 53.)

Bottisham

Post Office and Village Stores

12 High Street Bottisham Cambridge CB25 9DA
Tel: 01223 811281 PO Tel: 01223 812863

Shop opening: 5.30am-8pm 7 days
Post Office: 9am-5.30pm Sat 9am-12.30pm

Your All-in-One Shop

Groceries, chilled & frozen food, delicatessen, confectionery, off-licence, haberdashery, household, healthcare, stationery and greeting cards.

Free local delivery of grocery orders

TV licence, Top-ups, elec/gas keys/tokens, money transfer, phone cards, congestion charges.

Newsagency with home delivery to Bottisham, Lode, Longmeadow, Quy, Six Mile Bottom and Swaffham Bulbeck. Dry Cleaning & Floral Service

FREE TO USE ATM MACHINE

Vehicle Licences • Personal Banking • Foreign Exchange
Phone Cards & Mobile Top-Ups • On-line Lottery.

(Sports Nut continued.)

breathhtaking. But most of the players looked like clones of each other: tallish, slim, fast, athletic, neat, amazing first touch... All good, admirable qualities, but I do so miss the *personalities*: like Charlie George, Alan Ball, Norman Hunter, Rodney Marsh... name your own cast of characters from times when the league was substantially British, if not English!

I did chuckle, though, when Arsenal scored from a quintessentially English move: a long raking cross to the far post, a nod down and volley which bulged the net. This was the very essence of the traditional domestic game. Ironically the scorer was Mesut Özil.

TTFN

Gerry Daish

Copy deadline for next issue is 14 January.

Please send material to the editor at cresset@bottishampc.org.uk



"Nesslands of Burwell"



Your local Kennels, Cattery and Doggy Day Care!

Dog Grooming, Horse ménage and Caravan Storage facilities

Call Tim or Anya on 01838 720623 and 07809 613362
Ness Road, Burwell, CB25 0DB www.Nesslands.co.uk

Rothwell's Carpet Cleaning

Thorough, professional cleaning of Carpets, Upholstery,
Rugs, Tile & Grout and Natural Stone floors.

- 'Truck mount' cleaning system
- Family firm est 1993
- Great customer service
- We move all the furniture
- Fully Insured
- Highly trained & experienced
- **100% satisfaction or its free**

*If you use us,
you'll recommend us!*



For a quote
or advice please
07545 962 026
01223 832 928
www.rothwells.biz

Beauty By Abi

Qualified and insured Beauty Therapist
Master Technician in Eyelash Extensions

Treatments include: Gel Fix 2 week manicures, manicures and pedicures, eyelash extensions, eyelash and brow treatments, waxing, massage, tanning, facials and more

Phone 07969495073 for an appointment

LOCAL ELECTRICIAN

Bottisham based
20+ years experience

All domestic work undertaken:

- ❑ Rewires
- ❑ Lighting
- ❑ Burglar alarms
- ❑ Security lighting

Free quotations, NICEIC registered

Power Control Panels, est. 1969
01223 212 054 or 07718 122541



spoton
BODYWORK

PAINT SCRATCHES
BUMPER SCUFFS
DENTS
ALLOY WHEELS

Save your no-claims bonus,
by calling us direct.

For a free estimate
07796 231414
01284 811236

We come to you.
www.spotonbodywork.co.uk



ANGLIA TREE CARE

LARGE ENOUGH TO COPE • SMALL ENOUGH TO CARE

80% OF OUR WORK IS VIA RECOMMENDATIONS
TREE SURGERY & FELLING • HEDGE MAINTENANCE
STUMP GRINDING • FULLY QUALIFIED
FULLY INSURED • 24/7 SERVICE
All work carried out to BS 3998

Free Estimates Given within 7 days



Tel. 01223 424454 • INFO@ANGLIATREECARE.CO.UK

M E M B E R
Guild of Master Craftsmen

Anglesey Abbey and Wicken Fen

Thank you to everyone who joined us at our 60's evening at the Royal British Legion Club, held to publicise our Domestic Wing Project at Anglesey Abbey. We trust everyone enjoyed the 'trip down memory lane' and hopefully many readers will feel inspired to actively get involved with the project.

Work on the renovation of the domestic wing is progressing well and we are now on the lookout for artefacts to dress the rooms and form part of our handling collection. We've a pretty extensive list with everything from brush and comb sets, old cinema tickets, recipe books, cakes tins to old coal scuttles. The full list can be found on our website at <http://www.nationaltrust.org.uk/anglesey-abbey/join-in/> If you have items that you would like to donate please contact Rachel Stock (01223 810090 or e-mail rachel.stock@nationaltrust.org.uk). To help manage these donations we're looking to recruit a **Domestic Collections & Donations Volunteer**. The role would involve helping to identify and source artefacts, recording donations on our Catalogue Management System, keeping the donations store in good order, and helping develop future plans for the Domestic Wing to keep the story and the way it is shared fresh for our visitors. This role would require a commitment of around one day a fortnight, or more if you can. During the set-up phase of the Domestic Wing there is also likely to be regular meetings as we identify objects needed to dress places – this might involve some weekends – if you're interested please contact Sash Giles (01223 810083 e-mail sash.giles@nationaltrust.org.uk).

To bring the domestic rooms alive for our visitors we are now looking to recruit a team of **Encounter Volunteers** who will be at the heart of this new experience. It's an exciting role – answering questions and encouraging visitors to get involved, giving demonstrations, storytelling, preparing rooms for opening, to cleaning the rooms using period methods and products. If you're interested please contact Volunteer Manager, David Craig (01223 810089 e-mail david.craig@nationaltrust.org.uk) or you can attend one of our **Volunteer Open Days** on Saturday 18 and 25 January (10am -1pm in the Robinson Room, in the main Visitor Centre). Here you can discover more about volunteering in the Domestic Wing, and other areas of the property such as Lode Mill.

Finally, there's a tree care and planting day at the Lode & Longmeadow community woodland on White Fen on Saturday 11 January from 10am -2pm if you fancy popping along, whether for the whole day, or just an hour or two. For more information please contact Community Ranger, Lois Baker, on 01353 720274

Copy deadline for next issue is 14 January.

Please send material to the editor at cresset@bottishampc.org.uk

Have you thought of advertising your business in **The Cresset**?
Email the Editor for details: cresset@bottishampc.org.uk



Trevor's Local
Gardening Service

**For general garden care
and maintenance**

- Lawn and hedge trimming, turf laying and borders
- Patios and paths repaired and cleaned
- Fence and shed installation and repair
- Other small carpentry jobs undertaken by request

For a free quote contact
Trevor Cox

Tel: 01223 812616

M&P

LANDSCAPE AND DESIGN

Patios, Block Paving, Fencing,
Turving and all Gardening needs.

References available on request.

Local tradesman • Free estimates

PLEASE CALL

01223 811144

MOB **07837 358550**

Jolley Old World



Two very important events are planned to happen early next year which require us all to sit up, take note and to respond aptly!

Firstly; in a very welcome and positive move the Village College has invited the community to attend an open meeting to be held at the College in January. Hopefully the meeting will not turn into a discussion about how well the College is performing as a Secondary School but rather how the Village College can deliver its unique 'raison d'être' to the wider local community and in so doing benefit from the drive and support of the local community.

Secondly; more now than ever we must rally to the threat to the sustainability of this village's already overstretched amenities and infrastructure. But most importantly we must come together against the threat to our sanity, social cohesion and physical well-being – all because of a 'gluttonous' developer who clearly doesn't understand the message when the village says; 'enough is enough'!!

So, what has happened since the Bell Road Masterplan public consultation in September? In last month's Cresset a proposal was put forward to have an area of the Bell Road Green Belt turned into a Park - possibly as part of a Community Land Trust arrangement (CLT). And I note that others have also suggested something very similar in their response to the said Masterplan document. Anyway it would seem that David Wilson Homes (DWH) has picked up on this and is now proposing to build, **no not 50 but 150 new houses** on the very Green Belt land suggested for the village Park area. Furthermore, I understand that DWH is in dispute with East Cambs over the number of new houses 'needed' and 'wanted' by the village! Although I would argue that there is a very big difference between 'need' and 'want' I, like many, are yet to see the evidence from a village perspective that supports either the 'need or the want'. To our detriment DWH and their 'collaborators' know that they can sell houses in Bottisham because of its location and amenities! The fact that this developer and its partners are systematically destroying the very foundation of our village society and its social unity doesn't seem to matter a jot...

We are told that we need to build many more new houses, but why? Net migration in this region is stable and the majority of people living in the region have access to housing– admittedly, it may not possibly be their 'ideal' choice and of course there are always some exceptions to the rule but in the main accommodation can be found. Besides which, 69,000 house are standing empty in East Anglia alone out of over 700,000 empty houses country wide!! How often do you hear the argument emanating from those whose interests rest in housing development; "there are not enough houses available for first time buyers". Some commentators seriously argue that you should temporarily stop 'buy to let' purchases and also target the unprincipled 'rule busting' purchasers of first time buyer and affordable housing properties. I've heard talk of and read of many young couples who have come up against the financial muscle of the 'Slick Operator' wanting to build a portfolio of cheaper properties to let.

(Jolley continued on page 59.)



TIM PHILLIPS & Co. Accountants

Independent, specialist service for:
**Small Business • Self Assessment
Personal Taxation**

Free initial consultation – no obligation
EASY, FREE PARKING

Copley Hill Business Park, Cambridge Rd., Babraham
Off A1307 between Wandlebury and Babraham

Tel: 01223 830044. www.tpaccounts.co.uk



DRAIN-PLUMB

Plumbing, Heating & Drain Services

BLOCKED DRAINS CLEARED

- Gas Boiler Service & Maintenance
- Power Flushing of Boilers & Heating Systems
- Home Buyers CCTV Drain & Plumbing Surveys
- All Plumbing & Heating Repairs/Alterations
- All work Guaranteed

TEL: 01638 742873
MOB: 07932 773515

7 NESS ROAD,
BURWELL
CAMBRIDGE, CB25 0AA



APC Pest Control

SPECIALISTS IN THE HOME, WORKPLACE, COMMERCIAL
AND THE FARMING COMMUNITY

**Mice • Rats. Moles • Rabbits • Squirrels • Wasps • Insects
Birds • Foxes • Deer management**

HONEY BEE COLLECTION SERVICE

TEL. BURWELL 01638 741616
Free Surveys 24/7 service

www.apc-pest-control.co.uk email: arksg@live.co.uk

(Jolley continued.)

Of course I do realise that some of you may feel perfectly comfortable with more new housing development in the village. But if you do take this view then you must satisfy yourself and your conscience that the schools, sewerage works, Medical & Dental Centre, road infrastructure, parking and recreational facilities, etc., etc. can all support another 300 plus people and cars. It's no good relying on the Planners to police this for you because as far as they are concerned if there are no valid concerns or objections expressed then none of these issues is good enough reason to refuse planning permission. It's also worth remembering that this village has grown by around a fifth in 12 years and by over a third in 30 years yet its infrastructure has changed very little over the same period. I and many others would contend that this village has accommodated considerably more than its fair share of growth over recent times and in return it should be granted a moratorium.

One indication of just how unsustainable and how overstretched our infrastructure is; under a recent FOI request Anglian Water confirmed that; *over the last 8 months (they) have encountered issues with the daily running of the sewerage works and have had to tanker more frequently. On 3 occasions (they) have had a tanker there for 3 days to try and alleviate the problems.* Additionally Anglian Water; *has visited the site on 43 occasions over the last 12 months due to engineering and general maintenance issues.*

So, to conclude – in my opinion, which may or may not differ from yours, the onus is clearly on the ‘caring’ residents of this village to use the opportunities presented to express their opinions and to make their ideas known. The community at large must know where it stands on these issues and so, not to have your say will be a wasted chance to move this village out of complacency.

By the way, I have been instructed to add that my views (but not in this case) may not always and necessarily be those of the ‘management’... TJ

Copy deadline for next issue is 14 January.

Please send material to the editor at cresset@bottishampc.org.uk

To the Editor

Dear Editor,

This Village is experiencing lots of dangerous parking of motor vehicles, and I would like to remind drivers of their responsibilities when driving and parking.

Make sure when you park you are not on a bend, double yellow lines, within approximately 10 metres of a junction, on the footpath, cycle paths or across an entrance or double park, as several drivers do outside the shops, all the above must be avoided to not only make our roads safer but also for pedestrians who often have to move out into the road to pass unlawfully and dangerously parked vehicles on the footpaths. Also I appeal to drivers to park their vehicles on their own driveways or in their garages, rather than blocking the footpaths outside their homes, which is now a very dangerous practice especially in Spring Lane, and some other Streets. Just take a few minutes to consider other road users and let us aim to make this Villages Roads and foot/cycle paths as safe as possible. Cyclists must remember to use cycle paths where they exist, rather than create a hazard on roads.

(To the Editor continued on page 61.)

Need glasses? Save Your Money

Buy Direct

from ALL EYES Specs Makers

Complete frame & lenses:

✦ Single Vision from **£9.00!***

✦ Bifocals from £39.00*

✦ Varifocal from £59.00*

Save up to **75%** on:

- Premium frames & lenses
- High/Complex prescription
- Reglaze your own frame save £*

- Emergency supply & repairs*
- Large selection of frames
- Free NHS specs*

(*T & C's Apply, please ring for details)

Why pay more?

*Just bring in your prescription for a Top Quality
bargain*

Come and start saving:

20 Norman Way Ind. Park, Over, Cambridge CB24 5QE

www.all-eyes.co.uk

Factory Opens: (Mon-Fri) 9.00am to 5.00pm

Tel: **01954 231545** or 07824 706969

-Please ring to make an appointment-



ALL EYES
Spectacle Makers

(To the Editor continued.)

Rules Regarding Parking at Night Time, within a 30mph Speed Limit

During the hours of darkness, Motor Vehicles with an unladen weight of less than 1,525 Kgs, and vehicles that carry less than 8 passengers can park on the road without lights within the 30MPH area, provided the vehicles are parked with its nearside close and parallel to the kerb, and a minimum of 10 metres from a junction.

Vehicles outside the above described must display lights, including vehicles with projecting loads, even if under 1,525kgs, of course all vehicles must display lights if the speed limit is above 30MPH.

John Hutchinson

Copy deadline for the next issue is 14 January.

Please send material to the editor at cresset@bottishampc.org.uk

At a Glance

JANUARY

- 7/8/14/15/21/22/28/29 RBL Line dancing
4 RBL Childrens Disco party
7 PC Portrait Evening with a model. Bring your Camera and Tripod.
14 PC Projected Image Competition No.2 Judge Peter Howsam.
14 BVC Open Meeting 7.30pm
18 TRBL Burns Night Dinner
20 TRBL A.G.M. 8.00pm
21 PC If only I had. Members appraise & discuss their entries.
23 Bottisham Players in Panto 'Pinocchio'
28 B&DGC
28 PC - 'Images of India' Digital presentation by David Steel.

FEBRUARY

- 4/11/12/18/19/25/26 RBL Line dancing
4 PC Print Competition No. 2. Judge Jane Goodall ARPS
11 PC "Members Mini's". Talk by Peter Higdon & Alison Rawson.
18 PC Developing Ideas for an Audio Visual Presentation. Talk by Diana Burns ARPS
25 PC Photo Club - An Evening with Sue Brock-Hollinshead.
25 B&DGC

Notes: This information is now available on: www.bottishampc.org.uk

B&DGC = Bottisham & District Gardening Club meets at BRBL Poppy Restaurant at 7.30pm • RBL = Bottisham Royal British Legion Social Club • PC = Photo Club meets at Lode Chapel at 7.30pm - Non Members fee is £2 • W I = Meet at the BVC Lecture Room at 7.30pm • BCLA = Bottisham Community Library Assoc. • MU = Mother's Union meet at Lode Chapel 7.30pm, Third Thursday.

This list is intended to be a 'quick view one liner' with brief details and a contact number if possible. **Please let the editor have details by the 11th. E-mail:- cresset@bottishampc.org.uk**

Red2Green

Volunteers needed to support adults with learning disabilities within our Options service based in Swaffham Bulbeck and Bottisham

Options is a lively and unique service for people with learning disabilities. We provide a variety of activities including horticulture, arts and crafts and cookery. If you have a specific skill or enjoy working with people we would love to hear from you.

We also provide our own transport service, and are looking for good humoured volunteers to join our transport team.

Our Service runs between 8.30 to 4.30 Monday through to Friday. You can volunteer as little or as often as you wish.

For more information please contact Sarah or Phil on 01223 810112.

Turning the Red Lights Green is a registered charity no 1112429 and also a company registered in England and Wales no 5485413, trading as Red2Green.

CHRIS CLARKE Hairdressing

Phone 01223

811966

for an appointment.

BED AND BREAKFAST THE MEADOW HOUSE

2A High Street, Burwell,
Cambridge. CB25 0HB



- En-suite rooms with colour TV.
- Large car park and grounds.
- Family rooms, children welcome.
- English Tourist Board 4 Diamonds.

Self catering cottage also available at Swaffham Prior.

Brian and Hilary Marsh

Tel: 01638 741926

Fax: 01638 741861

Website: www.themeadowhouse.co.uk

Is renewable energy for you?



As solar panels become a common sight around our neighbourhoods, you may be wondering what options are available to you to save or even generate your own energy but it can be daunting knowing where to start. At Trading Standards we want to help you find a trader you can trust and make sure you know what you can expect of these businesses.

When considering the options available to you, the Energy Saving Trust (www.energysavingtrust.org.uk) is a good place to start. They are an independent organisation that provides free, expert advice on saving energy in your home. Their website contains extensive information, and they also have a helpline which can be contacted on 0300 1231234 (national rate).

In terms of funding any improvements, if you aren't able to pay for them up front, you could consider the Government's Green Deal Scheme (www.gov.uk/green-deal-energy-saving-measures) which allows for repayment over a period of time through your energy bills. As with any finance arrangement, make sure you know how much you will have to repay in total, what the monthly charges will be, and check the interest rate is competitive with other finance options. You should also be aware that with Green Deal the debt attaches to the property, so if you sell it, your buyer will have to take over the debt. If you need advice on finance options, your local Citizens Advice Bureau will be able to help you.

There are a range of businesses that offer home assessment visits to advise you on the options most suitable for your specific circumstances. You will usually need to pay for this and you should check whether there is a tie-in clause requiring you to use a certain business to do the installation work if you decide to go ahead. The assessment will give you estimated savings projections for the first year based on a specific level of energy usage. Unfortunately this means you won't know exactly what you will save, but you can at least check to make sure the estimate is based on a realistic level of energy usage for your situation.

In terms of finding a trader, it is important to shop around to ensure the business is reputable and that the price is fair before agreeing to any work.

Green Deal has its own approved assessors and installers, but if you are not using Green Deal we would recommend that you find an installer and products that are part of the Micro Generation Certification Scheme (MCS) or are Renewable Energy Assurance Limited (REAL) approved. These organisations have codes of practice that traders have to comply with and standards that the products have to meet. The Energy Saving Trust website allows you to search for local installers who belong to MCS. Some members also sit on our Buy With Confidence approved trader scheme giving you even greater assurance that they are businesses you can trust. Visit www.buywithconfidence.gov.uk for more details.

As always, we would recommend getting three quotes to ensure the installation price and projections are reasonable, and check the terms and conditions carefully before agreeing to anything.

If you encounter any problems with an assessor, installer or any other type of business and need some advice, please contact our advice partner, the Citizens Advice Consumer Helpline, on 08454 040506 (national rate).

Cambridge Poultry

(Point of Lay Chickens)



Laying Chickens and

Free Range Eggs Available.

Contact : 07505 619162

Bottisham Place, High Street
Bottisham



PET TIME

www.pettime-petcare.co.uk

Cat, dog and small animal feeding visits
Dog walking
Dog and small animal home boarding
Doggy day-care (crèche)
House and pet sitting
Pet taxi

Contact us:

07595 997206

01223 813494 (Swaffham Bulbeck)

info@pettime-petcare.co.uk

All animals from hamsters to horses cared
for just as you would want.
Fully insured, first aid trained and
police-checked.

RE:NEW

New Year, New Challenges

By the time you read this Christmas will be over and we will all be looking into another New Year. What will 2014 have in store for us?

At RE:NEW we are facing the challenge that Rev. Simon Goddard, who has been our minister for the past 8 years, will be taking up his new appointment as Regional Minister for the Eastern Baptist Association. Those of you who know Simon will appreciate how much he will be missed by all of us in the church. We don't know what 2014 has in store for us, but we know Someone who does! It is our prayer that in due course we will be able to appoint a new minister, but in the meantime we are determined to keep moving forward and growing, as we have over the last couple of years.

We will continue to meet every Sunday morning, for worship and fellowship, at Bottisham Primary School, and will continue to hold monthly evening services with a more traditional feel at Lode Chapel and Great Wilbraham Chapel. We would be very pleased to see you at any of our venues, so why not come along if you are looking to try something new in 2014!

Come for Contemporary! There is something for everyone at RE:NEW. Young and old and everyone in between! In our Sunday morning service the music is contemporary, but with a mix of modern and older songs and hymns. These are led by a music group usually consisting of keyboard, guitars, drums and vocals. The sermon aims to show how the timeless message of the Gospel relates to our everyday lives in the 21st Century.

Come for Traditional! The twice-monthly Chapel services will appeal to those who prefer a more traditional worship service.

Come for Coffee! Our monthly Cafe service is very different in style, with no sermon and no singing – we sit around tables with coffee and cake! There are newspapers to read and we can sit and chat in a very relaxed atmosphere. Part way through we watch a short (10 minute) DVD which looks at some aspect of the Christian faith and is followed by a discussion for those who wish to join in. No pressure! This gives everyone an opportunity to ask questions or express an opinion. Every week the children and young people have their own age-appropriate groups. Whichever type of service you choose we can promise you a warm and friendly welcome.

Come and try RE:NEW in 2014!

For more information about any of the activities of RE:NEW please contact Rev. Keith Morrison on C.813055 or Peter Wells on C.812388.

Email: pandawells@cheerful.com Or visit our website at www.re-new.me.uk

Services in January 2014

Sun 5th Jan. 10.30am – RE:NEW (Bottisham Primary School)

Sun 12th Jan. 10.30am – RE:NEW Café Style (at the School)

Sun 12th Jan. 6.20pm – Traditional Service (Lode Chapel)

Sun 19th Jan. 10.30am – RE:NEW (at the School)

Sun 26th Jan. 10.30am – RE:NEW (at the School)

Sun 26th Jan. 6.20pm – Traditional Service (Great Wilbraham Chapel)

At Wired we don't have problems - only solutions



We offer solutions for all your Aerial, Freesat, CCTV, Telephone
and Data Cabling needs.

No job is too big or too small for our engineers.

With no call centres, you will be able to speak directly to the engineer.

We offer an efficient, cost effective and friendly service.

Contact us now for a no obligation quote.

Contact us NOW for a free no obligation quote

01638 281234 / 07761 572186

www.allwired.co.uk

info@allwired.co.uk

wired

TV AERIALS
SATELLITE
DIGITAL FREEVIEW

Installations
Extra points etc.
Tuning in of TVs, Digiboxes etc.

Experienced local engineer
RICHARD FORTEY
01638 662119
No Call Out Charge



Retreating forward
A time for reflecting back, and thinking

The next in a series of half day retreats, is on Saturday 8th February, for men and women of all ages.

The theme will be "Winter into Spring"

Great Wilbraham Primary School, Church Street, CB21 5JQ. Parking available.

Starting 8.45 a.m., with continental breakfast. During the morning there will be two quiet periods with some brief thoughts on how our faith might be nurtured in 2014. The quiet time can be used in different ways, for example - sitting quietly, using art materials, reading poems and scripture, walking in the village or using the beautiful nearby medieval St Nicholas Church for quiet contemplation. We will finish by 12.30pm.

The event will be led by Stephen Harmer, a counsellor with experience of quiet days, and Ian Randall, a minister and lecturer in Christian spirituality. This mini-retreat is ecumenical, supported locally by RE:NEW of Bottisham, Lode and Wilbraham chapels, and St Nicholas the Great Wilbraham parish church.

To book go to – <http://re-new.me.uk/2013/12/04/half-day-retreats-2/> Register by filling a contact form via website above. The charge will be £8, payable online, also payable on the day by cheque. For any other queries email miniiretreats@btinternet.com

BOTTISHAM DENTAL PRACTICE

NHS & PRIVATE TREATMENT

CLAIRE JACKMAN BDS & ASSOCIATES

Tunbridge Lane, Bottisham, Cambs., CB5 9AE

OPEN: MONDAY 9.00 am to 5.00 pm
TUESDAY 9.00 am to 5.00 pm
WEDNESDAY 9.00 am to 5.00 pm
THURSDAY 9.00 am to 5.00 pm
FRIDAY 9.00 am to 5.00 pm
SATURDAY Private 9.00 am to 1.00 pm

New NHS and Private Patients Welcome

Please phone for an appointment
01223 811844

Bottisham Parish Council

CHAIR

CHRISTINE BRYANT 127 High Street 811767

PARISH COUNCILLORS

ROBERT ALTHAM Hall Farm, Lode Road 811418
STEVEN ARONSON 61 Bell Road 812823
HILDA BUCHANAN 55 Beechwood Avenue 811689
MARIA DICKSON 5 Jenyns Close 812499
RUTH EASTHOPE 15 Bell Road 812459
ROS HALL 18 Spring Lane 811819
MARK HEIDER 6 Rowley Garden 813524
STEVEN O'DELL 23 Downing Close 812230
JON OGBORN Woodward Drive 812631
PAUL WHITE 65 Ox Meado 813630

DISTRICT COUNCILLORS

KEVIN ELLIS 20 Peacock Drive 813034
ROBERT STEVENS 51 Northfields, Lode 811643

COUNTY COUNCILLOR

MATHEW SHUTER The Old Maltings, High St, Brinkley 01638 508729

PARISH CLERK

CLAIRE FULLWOOD 26 Peacock Drive 07914 219732

BOTTISHAM COMMUNITY LIBRARY ASSOCIATION

LIBRARY OPENING HOURS

Monday Closed
Tuesday 3-5pm and 6-8pm
Wednesday 10-11.30am
Thursday 3-5pm
Friday 6-8pm
Saturday 10am-12noon

Working in Partnership with the County Library Service.

Useful Information

Bottisham Website:	WWW.BOTTISHAMPC.ORG.UK
Holy Trinity Church:	812726
Roman Catholic Priest: Monsignor Eugène Harkness. Parish of St Philip Howard	01223 211235
RE:NEW/Lode Chapel: Rev. Simon Goddard.....	01223 812881
Bottisham Surgery:	
Enquiries and Appointments	810030
Out of Hours only – Urgentcare Cambridge.....	0330 1239131
Bottisham Library:	812354
Library hours: Monday Closed; Tuesday 3-5pm and 6-8pm; Wednesday 10-11.30am Thursday 3-5pm; Friday 6-8pm; Saturday 10am-12noon	
Cambridgeshire Police HQ:	01480 456111
Cambridgeshire Police:(NON-URGENT MATTERS) ring 101 - In EMERGENCIES ring 999 Police community support officer Ian Hawkins PCSO 7274 at Ely Police StationContact through 101	
1st Bottisham Rainbows/1st Bottisham Brownies: Kay Pearce.....	811055
Bottisham Bowling Club: Keith Gibson, Secretary	811049
Bottisham Boys Football Club: Jim Tideswell	812591
Bottisham Carpet Bowls Club: Nora Watson	812121
Bottisham Community Primary School: Headteacher Paul Belzar.....	811235
Bottisham Cricket Club: Graham Barker/Charles Fletcher.....	812087/811039
Bottisham Football: John Turner/Tim Sale	07841592203/07743862836
Bottisham Pharmacy:	812321
Bottisham Pool Association: Manager - Jason Rye.....	811121
Bottisham Royal British Legion Club: Secretary - Suzy Woolley.....	812063
Branch Chairman: John Overton	811792
www.britishlegion.org.uk/branches/bottisham	
Bottisham Scout Group: Group Contact: Linda Jones	813040
Bottisham Sports Association: Graham Barker	812087
Bottisham Village College, School:	811250
Evening Classes, Clubs and Youth Club Information	811372
Bottisham W.I.: Secretary - Jenn White jenn65@tiscali.co.uk.....	811600
Cambridgeshire County Councillor: Mathew Shuter.....	01638 508729
East Cambridgeshire District Offices:	01353 665555
East Cambridgeshire District Councillors: Kevin Ellis	813034
Robert Stevens.....	811643
Girlguiding Bottisham District: Cambs East County office • www.cambseastguides.org.uk	01223 813917
Parish Council Chairman: Christine Bryant	811767
Parish Council Clerk: Claire Fullwood	07914 219732
Queen's Court Day Centre:	811905
MP for Cambs South East Constituency: James Paice (House of Commons. London SW1).....	Direct Line: 020 7219 5063 E-mail: paicejet@parliament.uk www.jimpaice.com Fax: 020 7219 3804
Cambridgeshire Trading Standards Helpdesk:	0845 3030666
Saplings Playgroup Playhut:	813226
Milton Road Tip: Apr to Sept - Weekdays 9.00am-8.00pm: Weekends 9.00am-6.00pm..... Oct to Mar - 9.00am-4.00pm	860674
CRESSET Editor:	email: cresset@bottishampc.org.uk
Treasurer, Advertising rates and payment: Rhona Walker, 94 High Street, Bottisham.....	811402
Distribution: Ken York, 20 Pound Close, Bottisham.....	811367
Design/Artwork: ONG • codge.com • codge@codge.com.....	01449 675548

The Cresset: While every effort is made to ensure accuracy we cannot accept liability for any mistakes or misprints. The views of, or any opinions expressed, are not those of the EDITOR. The Editor cannot accept any responsibility for statements made in advertisements.



Let's raise our glasses to the
hope and prosperity
a new year promises!!

■ promotionaldesign ■ brandidentity ■ advertising ■ marketing ■ directmail ■ packaging
exhibitions ■ outdooradvertising ■ ecomms ■ logodesign ■ illustration ■ photography
■ retouching ■ businesscollateral ■ copywriting ■ brochures ■ magazines ■ bookcovers
programmes ■ prospectuses ■ booklets ■ posters ■ pamphlets ■ catalogues ■ MACtraining

codge.com ■ **codge@btinternet.com** ■ **01449 675 548**

Sales • Service • MoT

Brian McKay

BT Approved Supplier

**Servicing & MoT testing to all makes of Cars and
Light Commercial Up to 3.5 tons**



**VEHICLE TESTING
STATION
CLASS IV & VII**

**Newmarket Road
Bottisham
Cambridge
Telephone 01223 813200**

E.C. AUTOCARE

(Est. 1980)



SERVICING & REPAIRS
Cars & Light Commercials
Diesel & Petrol



MOT TESTING STATION

Servicing to all makes of Cars
& Light Commercials

- ENGINE MANAGEMENT DIAGNOSTICS
- TYRE - BRAKES - EXHAUSTS
- AIR CONDITIONING SERVICING
- GEARBOX SPECIALISTS MANUAL & AUTOMATIC

FAST - FRIENDLY - FAMILY BUSINESS

56 HIGH STREET, BOTTISHAM

Also at

A1303 SERVICE STATION, BOTTISHAM

(behind Brian McKay)

Tel.01223 811122 or 01223 812357

